



Tracking

Supply Chain Efficiency & Integrity

Dentsu Aegis Network
DATA DICTIONARY FOR ECONOMIC OPERATORS v1.1

This document details the Data Dictionary for EU Secondary Repository and Router.

Summary of changes

| Date | Version | Done by | Comment |
|------------|---------|----------------------|--------------------------------------|
| 17.01.2019 | 0.1 | Dentsu Aegis Network | Internal Draft |
| 05.02.2019 | 0.2 | Dentsu Aegis Network | First Draft shared with stakeholders |
| 21.02.2019 | 1.0 | Dentsu Aegis Network | First release |
| 11.03.2019 | 1.1 | Dentsu Aegis Network | Minor changes |

Distribution

| Date | Version | Submitted to |
|------------|---------|---------------------|
| 05.02.2019 | 0.2 | Mail to stakeholder |
| 21.02.2019 | 1.0 | Published |
| 11.03.2019 | 1.1 | Published |

Legal Notice

The document shall be used for Implementing Regulation (EU) 2018/574 implementation purposes only.

The document shall not be modified, truncated nor published.

Any logos or drawings related to the Dentsu Aegis are trademarks, registered trademarks or official marks of Dentsu Aegis Network.

Table of Contents

| | | |
|----------|--|-----------|
| 1 | INTRODUCTION | 6 |
| 2 | DATA DESCRIPTION | 7 |
| 2.1 | DATA TYPES..... | 7 |
| 2.2 | PRIORITY TYPES..... | 9 |
| 2.3 | CARDINALITY TYPES | 10 |
| 2.4 | MINIMUM DATA MODEL | 10 |
| 2.4.1 | Event..... | 11 |
| 2.4.2 | Product | 12 |
| 2.4.3 | TobaccoProductItem..... | 13 |
| 2.4.4 | UniquelIdentifier | 15 |
| 2.5 | REGISTERED ENTITIES..... | 16 |
| 2.5.1 | EconomicOperator..... | 16 |
| 2.5.2 | Facility..... | 17 |
| 2.5.3 | ManufacturingMachine..... | 18 |
| 2.6 | MASTER DATA TYPES..... | 19 |
| 2.6.1 | Country | 19 |
| 2.6.2 | DeactivationReasonType..... | 24 |
| 2.6.3 | EventState..... | 24 |
| 2.6.4 | EventType | 25 |
| 2.6.5 | FacilityType | 27 |
| 2.6.6 | InvoiceType..... | 27 |
| 2.6.7 | NotificationType | 27 |
| 2.6.8 | PaymentType | 27 |
| 2.6.9 | RecallReasonType..... | 28 |
| 2.6.10 | RegisterStatus | 28 |
| 2.6.11 | TobaccoProductType..... | 28 |
| 2.6.12 | TransportMode | 28 |
| 2.6.13 | UniquelIdentifierState..... | 29 |
| 2.6.14 | UniquelIdentifierType | 29 |
| 3 | MESSAGES | 30 |
| 3.1 | MESSAGE TYPES TO BE EXCHANGED | 30 |
| 3.1.1 | Optional I12MN I12DW interfaces..... | 31 |
| 3.1.2 | Message and endpoints | 31 |
| 3.2 | COMMON SCHEMA ELEMENTS | 31 |
| 3.2.1 | Basic information block concerning the request | 31 |
| 3.2.2 | Basic information block concerning the response..... | 32 |
| 3.2.3 | Common Error codes | 32 |
| 3.3 | IDENTIFIER CODES FOR ECONOMIC OPERATORS, FACILITIES AND MACHINES MESSAGES | 32 |
| 3.3.1 | REO - (1.1) Registration of an Economic operator | 32 |
| 3.3.2 | REOD - Data Registration of an Economic operator | 34 |
| 3.3.3 | CEO – (1.2) Correction for an economic operator identifier code | 38 |
| 3.3.4 | DEO – (1.3) De-registration of economic operator identifier code..... | 40 |
| 3.3.5 | RFAD – (1.4) Request for a facility identifier code | 42 |
| 3.3.6 | CFA – (1.5) Correction of information concerning the facility identifier code | 44 |
| 3.3.7 | DFA – (1.6) De-registration of facility identifier code | 47 |
| 3.4 | UNIQUE IDENTIFIERS MESSAGES | 49 |
| 3.4.1 | ISU – (2.1) Request for unit level UIs | 49 |
| 3.4.2 | IRU – Message to report the issuance of serial numbers at unit packet level | 51 |
| 3.4.3 | ISA – (2.2) Request for aggregated level UIs | 53 |
| 3.4.4 | IRA – Request for reporting the issuance of serial numbers at aggregated level | 54 |
| 3.4.5 | IDA – (2.3) Request for deactivation of UIs..... | 56 |
| 3.4.6 | EUA – (3.1) Application of unit level UIs on unit packets | 58 |
| 3.4.7 | EPA – (3.2) Application of aggregated level UIs on aggregated packaging..... | 59 |

| | | |
|----------|--|-----------|
| 3.4.8 | <i>EDP – (3.3) Dispatch of tobacco products from a facility</i> | 61 |
| 3.4.9 | <i>ERP – (3.4) Arrival of tobacco products at a facility</i> | 64 |
| 3.4.10 | <i>ETL – (3.5) Trans-loading</i> | 65 |
| 3.4.11 | <i>EUD – (3.6) Disaggregation of aggregated level UIs</i> | 67 |
| 3.4.12 | <i>EVR – (3.7) Report the delivery carried out with a vending van to retail outlet</i> | 69 |
| 3.5 | TRANSACTIONAL EVENTS | 71 |
| 3.5.1 | <i>EIV – (4.1) Issuing of the invoice</i> | 71 |
| 3.5.2 | <i>EPO – (4.2) Issuing of the order number</i> | 73 |
| 3.5.3 | <i>EPR – (4.3) Receipt of the payment</i> | 75 |
| 3.6 | RECALL | 77 |
| 3.6.1 | <i>RCL – (5.0) Recalls of requests, operational and transactional messages</i> | 77 |
| 4 | LIST OF ERROR CODES | 79 |
| 4.1 | SECURITY ERRORS | 79 |
| 4.2 | PROCESSING ERRORS | 79 |
| 4.3 | VALIDATION ERRORS | 79 |

1 Introduction

This document defines a data dictionary for Dentsu Tracking System. It will include information about data base entities and flows, authentication, operational and transactional methods, security edge case, router definition, error messages, registration process and an overall connection diagram.

Note: For the description of the Repositories system components, architecture, processes, data flows, list of interfaces and messages, see the List of Specifications document.

2 Data description

2.1 Data types

There are some types used along the document, which need to be defined.

| Data Type | Description | Type | Example or regular expression |
|-----------|---|-----------|--|
| ARC | Administrative Reference Code (ARC) or any successive code adopted under the Excise Movement and Control System (EMCS) | Text(30) | 15GB0123456789ABCDEF0' |
| aUI | Aggregated level unique identifier coded with: either The invariant set of ISO646:1991 and composed of four blocks: (a) ID issuer's prefix in accordance with ISO15459-2:2015, (b) serialization element in the format established by the ID issuer, (c) tobacco facility identifier code following the Data Type: FID and (d) timestamp following the Data Type: Time(s) or The invariant set of ISO646:1991 forming a code structured in accordance with ISO15459-1:2014 or ISO15459-4:2014 (or their latest equivalent)) | Text(100) | |
| Boolean | Boolean value | Boolean | <ul style="list-style-type: none"> • 0 (false/disabled) • 1 (true/enabled) |
| Component | A data type defined in the data dictionary | | Aggregation |
| Country | Country name coded with ISO-3166-1:2013 alpha-2 (or its latest equivalent) | Text(2) | 'DE' |
| Currency | Currency name coded with ISO 4217:2015 (or its latest equivalent) | Text(3) | 'EUR' |
| Date | A UTC data in text corresponding to the following format: YYYY-MM-DD | Text(10) | E.g. '2017-03-31' |
| Decimal | Number values, decimal allowed | Decimal | E.g. '1' or '22.2' or '333.33' |
| Email | Maximum 80 characters | Text(80) | ^[!_a-z0-9-]+\.[!_a-z0-9-9]+)*@[a-z0-9]+\.[a-z0-9-9]+)*\.[a-z]{2,3})\$ |
| EOID | Economic operator identifier code corresponding to the format established by ID | Text(50) | |

| | | | |
|---------|--|----------|---------------------------|
| | <p>issuer coded with the invariant set of ISO646:1991</p> <p>EDOI starts with the alphanumeric characters that constitute the ID issuer identification code, followed by alphanumeric sequence which is unique within the code pool of the ID issuer.</p> | | |
| FID | Tobacco facility identifier code corresponding to the format established by ID issuer coded with the invariant set of ISO646:1991 | Text(50) | |
| Integer | Rounded number values, no decimal numbers | Integer | E.g. '1' or '22' or '333' |
| IIID | ID Issuer code in line with the issuing agency codes of ISO/IEC 15459 | Text(35) | E.g. 'FTR' |
| ITU | Individual transport unit code (e.g. SSCC) generated in accordance with ISO15459-1:2014 (or its latest equivalent) | | '00791234560000000018' |
| List | Must be only one of the values present in the 'Values' column | | |
| MID | Machine identifier code corresponding to the format established by ID Issuer coded with the invariant set of ISO646:1991 | Text(50) | |
| MRN | Movement Reference Number (MRN) is a unique customs registration number. It contains 18 digits and is composed of the following elements: (a) last two digits of the year of formal acceptance of export movement (YY), (b) country name coded with ISO3166-1:2013 alpha-2 (or its latest equivalent) of the Member State to which the declaration was sent, (c) unique identifier for entry/import per year and country, and (d) check digit. | Text(18) | '19IT9876AB88901235' |
| PN | Product number – numeric identifier used in the EUCEG system to identify product presentations (e.g. GTIN (Global Trade Identification Number) of the product) | Text(30) | '00012345600012' |
| SEED | Excise number composed of: (a) country name coded with ISO-3166-1:2013 alpha-2 (or its latest equivalent) (e.g. 'LU') and (b) eleven alphanumeric characters, if needed, padded to the left with zeroes (e.g. '00000987ABC'). | Text(13) | LU00000987ABC' |

| | | | |
|----------|---|----------|-------------------------------|
| Serial | Number corresponding with the invariant set of ISO646:1991 used for serialisation | | |
| SSCC | SSCC-18 container code generated in line with ISO6346:1995 (or its latest equivalent) | Text(20) | 00791234560000000018 |
| Text (X) | Alphanumeric values coded with ISO8859-15:1999 limited to X characters | | E.g. 'Abcd' or '123455588845' |
| Time(s) | UTC (Coordinated Universal Time) time in the following format: YYMMDDhh | Text(8) | '19071619' |
| Time(L) | UTC (Coordinated Universal Time) time in the following format: YYYY-MM-DDThh:mm:ssZ | Text(34) | E.g. '2020-03-31T23:16:45Z' |
| TPID | Tobacco Product Identifier (TP-ID) – numeric identifier used in the EU-CEG system in the format: NNNNN-NNNNNNN | Text(14) | 02565-16-00230' |
| upUI(L) | Unit packet level unique identifier coded with the invariant set of ISO646:1991 and composed of three blocks: (a) ID Issuer's prefix in line with ISO154592:2015, (b) middle block in the format established by ID Issuer and (c) timestamp following the Data Type: Time(s) | | |
| upUI(s) | Unit packet level unique identifier coded with the invariant set of ISO646:1991 and composed of two blocks: (a) ID Issuer's prefix in line with ISO154592:2015 and (b) serialisation element in the format established by ID issuer (i.e. UI made visible in the human readable format on the unit packets) | | |

2.2 Priority types

| Type | Explanation |
|---------------|---|
| Mandatory (M) | The variable must be completed. |
| Optional (O) | The variable is for optional fields which could be filled depending on the record status or type. |

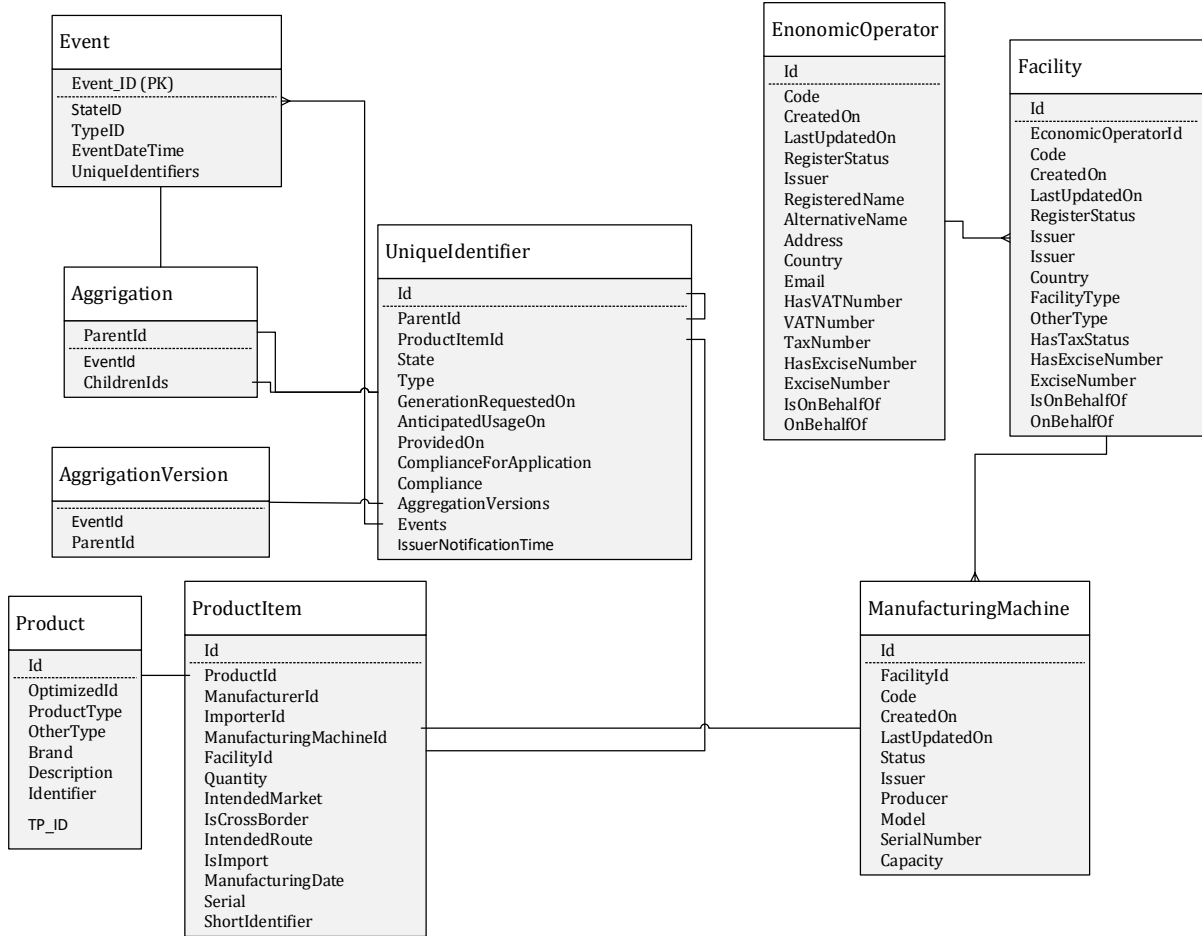
2.3 Cardinality types

| Type | Explanation |
|--------------|-----------------|
| Simple (S) | Single value |
| Multiple (M) | Multiple values |

2.4 Minimum Data model

The minimal data model describes the contents, format, and structure of a database and the relationship between its different elements.

Note: the Minimum Data Model may be extended.



2.4.1 Event

| Field | Description | Data Type | Mandatory | Comments |
|----------------|--|---------------|-----------|-----------------|
| Id (PK) | Internal identification number of this event | Integer | M | |
| StateID | The state of the event | EventState ID | M | EventState Type |
| TypeID | The type of the event | EventType ID | M | EventType Type |
| EventDateTime | Date and Time when the event occurs | Time(L) | M | |
| Content | Full content of the event. | Component | M | |

2.4.2 Product

| Field | Description | Data Type | Mandatory | Comments |
|----------------|--|-----------|-----------|---|
| Id (PK) | Internal identification number. This number is generated by the ID Issuer | Text(4) | M | |
| TP_ID | Tobacco Product Identifier (TP-ID) – numeric identifier used in the EU-CEG system in the format: NNNNN-NNNNNNN | TPID | M | |
| ProductType | Type of tobacco product | Integer | M | TobaccoProductType Type |
| OtherType | Description of other type of tobacco product | Text | | M, if Product_Type = 11 (other tobacco product) |
| Brand | Brand of tobacco product | Text(100) | M | |
| Description | The description of the tobacco product | Text(100) | | |
| Identifier | Additional identifier used to refer to the product (e.g. GTIN or other identification number provided by the manufacturer) | Text(20) | | |

2.4.3 TobaccoProductItem

| Field | Description | Data Type | Mandatory | Comments |
|------------------------------|---|--------------------------|-----------|-------------------|
| Id (PK) | The identification code (i.e. unique identifier) of the product item as required by Article 15(2) | upUI(L) | M | |
| ProductId (FK) | The identification code of the product | Product Id | M | |
| ManufacturerId (FK) | Identifier of the manufacturer of this tobacco product | MID | M | |
| ImporterId (FK) | The identifier of the importer into the Union, if applicable | EOID | | |
| ManufacturingMachine_Id (FK) | The identifier of the manufacturing machine | ManufacturingMachine MID | M | |
| FacilityId (FK) | The identifier of the manufacturing facility. This date is the one used for requesting the issuance of codes. | Facility FID | M | |
| IntendedMarket | Intended country of retail sale | Country | M | |
| IsCrossBorder | Indication if the product is intended to be moved across country borders with terrestrial transport | Boolean | M | 0 – No 1 – Yes |

| | | | | |
|-------------------|--|---------|---|---------------------------|
| IntendedRoute | The first country of terrestrial transport after the product leaves the Member State of manufacturing or the Member State of importation | Country | | M, if Intended_Route1 = 1 |
| IsImport | Indication if the product is imported into the EU | Boolean | M | 0 – No 1 – Yes |
| ManufacturingDate | Date of manufacturing. This date is the one used for requesting the issuance of codes | Time(s) | M | |
| Serial | Serial number provided by the ID Issuer | Serial | M | |
| ShortIdentifier | Short unique identifier | upUI(s) | | |

2.4.4 UniquelIdentifier

| Field | Description | Data Type | Mandatory | Comments |
|------------------------|---|---------------------------|-----------|-----------------------------|
| ID (PK) | Unique identifier of the unit packets or aggregated packaging level | Text(50) | M | |
| State | The state of the unique identifier | UniquelIdentifierState ID | M | UniquelIdentifierState Type |
| Type | The type of the unique identifier | UniquelIdentifierType ID | M | UniquelIdentifierType Type |
| GenerationRequestedOn | Date and Time when the generation was requested | Time (L) | M | |
| AnticipatedUsageOn | Date and Time when the generator intends to use it | Time (L) | M | |
| IssuerNotificationTime | Date and Time when the generation was notified to the storage | Time(L) | M | |
| ParentId | The identifier of the parent element that contains this item | UniquelIdentifier ID | O | |

2.5 Registered entities

2.5.1 EconomicOperator

| Field | Description | Data Type | Mandatory | Comments |
|-----------------|--|-----------|-----------|--|
| Id (PK) | Economic operator identifier code. This number shall be unique at EU level. | EOID | M | |
| Code | Confirmation code in response to the registration request. It is generated by the ID Issuer solution. | Text(20) | M | |
| CreatedOn | Timestamp when the registration has been accomplished | Time(L) | M | |
| LastUpdatedOn | Timestamp of the last change on the register | Time(L) | | |
| RegisterStatus | Status of the registration | Integer | M | RegisterStatus Type |
| Issuer | Identification number of the ID Issuer solution that has processed the registration | IIID | M | |
| RegisteredName | Economic operator's registered name | Text(100) | M | |
| AlternativeName | Economic operator's alternative or abridged name | Text(100) | | |
| Address | Economic operator's address – street name, house number, postal code, city | Text(300) | M | |
| Country | Economic operator's country of registration | Country | M | Country Type |
| Email | Economic operator's email address; used to inform about registration process, incl. subsequent changes and other required correspondence | Email | M | |
| HasVATNumber | Indication of the VAT registration status | Boolean | M | 0 – No VAT registration 1 – VAT number exists |
| VATNumber | Economic operator's VAT number | Text(20) | | M, if VAT_R = 1 |

| | | | | |
|------------------------|--|----------|---|----------------------------|
| TaxNumber | Economic operator's tax registration number | Text(20) | | M, if VAT_R = 0 |
| HasExciseNumber | Indication if the economic operator has an excise number issued by the competent authority for the purpose of identification of persons/premises | Boolean | M | 0 – No SEED number |
| ExciseNumber | Economic operator's excise number issued by the competent authority for the purpose of identification of persons/premises | SEED | | M, if EO_ExciseNumber1 = 1 |
| IsOnBehalfOf | Indication if the registration is made on behalf of a retail outlet operator not involved otherwise in the tobacco trade | Boolean | M | |
| OnBehalfOf | Identifier of the economic operator that acts on behalf of a retail outlet operator not involved otherwise in the tobacco trade | EOID | | M, if Reg_3RD = 1 |

2.5.2 Facility

| Field | Description | Data Type | Mandatory | Comments |
|-------------------------|---|-----------|-----------|---------------------|
| Id (PK) | Facility identifier code | FID | M | |
| EconomicOperatorId (FK) | The identification number of the economic operator that owns this facility | EOID | M | |
| Code | Confirmation code in response to the registration request. It is generated by the ID Issuer solution. | Text(20) | M | |
| CreatedOn | Timestamp when the registration has been accomplished | Time(L) | M | |
| LastUpdatedOn | Timestamp of the last change on the register | Time(L) | | |
| RegisterStatus | Status of the registration | Integer | M | RegisterStatus Type |
| Issuer | Identification number of the ID Issuer solution that has processed the registration | IIID | M | |
| Issuer | Facility address – street name, house number, postal code and city | Text | M | |

| | | | | |
|-----------------|---|---------|---|--|
| Country | Facility country | Country | M | Country Type |
| FacilityType | Type of facility | Integer | M | FacilityType Type |
| OtherType | Description of other facility type | Text | | M, if F_Type = 4 |
| HasTaxStatus | Indication if a part of the facility has a tax (excise) warehouse status | Boolean | M | 0 – No 1 – Yes |
| HasExciseNumber | Indication if the facility has an excise number issued by the competent authority for the purpose of identification of persons/premises | Boolean | M | 0 – No SEED number |
| ExciseNumber | Facility's excise number issued by the competent authority for the purpose of identification of persons/premises | SEED | | M, if F_ExciseNumber1 = 1 |
| IsOnBehalfOf | Indication if the registration is made on behalf of a retail outlet operator not involved otherwise in the tobacco trade | Boolean | M | 0 – No 1 – Yes (possible only if F_Type = 3) |
| OnBehalfOf | Identifier of the economic operator that acts on behalf of the retail outlet operator not involved otherwise in the tobacco trade | EOID | | M, if Reg_3RD = 1 |

2.5.3 ManufacturingMachine

| Field | Description | Data Type | Mandatory | Comments |
|----------------------|---|-----------|-----------|---------------------|
| Id (PK) | The identification number of the manufacturing machine. This number is issued by the ID Issuer solution, which shall ensure that the combination of M_ID, F_ID and EO_ID is unique at EU level. | MID | M | |
| FacilityId | The identification number of the facility that owns this machine | FID | M | |
| Code | Confirmation code in response to the registration request. It is generated by the ID Issuer solution | Text(20) | M | |
| CreatedOn | Timestamp when the registration has been accomplished | Time(L) | M | |
| LastUpdatedOn | Timestamp of the last change on the register | Time(L) | | |
| Status | Status of the registration | Integer | M | RegisterStatus Type |

| | | | | |
|--------------|---|----------|---|--|
| Issuer | Identification number of the ID Issuer solution that has processed the registration | IIID | M | |
| Producer | Machine producer | Text(20) | M | |
| Model | Machine model | Text(20) | M | |
| SerialNumber | Machine serial number | Text(20) | M | |
| Capacity | Maximum capacity over 24hour production cycle expressed in unit packets | Integer | M | |

2.6 Master Data Types

2.6.1 Country

| Code | Value |
|------|----------------------------------|
| AD | Andorra |
| AE | United Arab Emirates |
| AF | Afghanistan |
| AG | Antigua and Barbuda |
| AI | Anguilla |
| AL | Albania |
| AM | Armenia |
| AO | Angola |
| AQ | Antarctica |
| AR | Argentina |
| AS | American Samoa |
| AT | Austria |
| AU | Australia |
| AW | Aruba |
| AX | Åland Islands |
| AZ | Azerbaijan |
| BA | Bosnia and Herzegovina |
| BB | Barbados |
| BD | Bangladesh |
| BE | Belgium |
| BF | Burkina Faso |
| BG | Bulgaria |
| BH | Bahrain |
| BI | Burundi |
| BJ | Benin |
| BL | Saint Barthélemy |
| BM | Bermuda |
| BN | Brunei Darussalam |
| BO | Bolivia (Plurinational State of) |
| BQ | Bonaire, Sint Eustatius and Saba |
| BR | Brazil |
| BS | Bahamas |

| | |
|----|---|
| BT | Bhutan |
| BV | Bouvet Island |
| BW | Botswana |
| BY | Belarus |
| BZ | Belize |
| CA | Canada |
| CC | Cocos (Keeling) Islands |
| CD | Congo, Democratic Republic of the |
| CF | Central African Republic |
| CG | Congo |
| CH | Switzerland |
| CI | Côte d'Ivoire |
| CK | Cook Islands |
| CL | Chile |
| CM | Cameroon |
| CN | China |
| CO | Colombia |
| CR | Costa Rica |
| CU | Cuba |
| CV | Cabo Verde |
| CW | Curaçao |
| CX | Christmas Island |
| CY | Cyprus |
| CZ | Czechia |
| DE | Germany |
| DJ | Djibouti |
| DK | Denmark |
| DM | Dominica |
| DO | Dominican Republic |
| DZ | Algeria |
| EC | Ecuador |
| EE | Estonia |
| EG | Egypt |
| EH | Western Sahara |
| ER | Eritrea |
| ES | Spain |
| ET | Ethiopia |
| FI | Finland |
| FJ | Fiji |
| FK | Falkland Islands (Malvinas) |
| FM | Micronesia (Federated States of) |
| FO | Faroe Islands |
| FR | France |
| GA | Gabon |
| GB | United Kingdom of Great Britain and Northern Ireland |
| GD | Grenada |
| GE | Georgia |
| GF | French Guiana |
| GG | Guernsey |

| | |
|----|--|
| GH | Ghana |
| GI | Gibraltar |
| GL | Greenland |
| GM | Gambia |
| GN | Guinea |
| GP | Guadeloupe |
| GQ | Equatorial Guinea |
| GR | Greece |
| GS | South Georgia and the South Sandwich Islands |
| GT | Guatemala |
| GU | Guam |
| GW | Guinea-Bissau |
| GY | Guyana |
| HK | Hong Kong |
| HM | Heard Island and McDonald Islands |
| HN | Honduras |
| HR | Croatia |
| HT | Haiti |
| HU | Hungary |
| ID | Indonesia |
| IE | Ireland |
| IL | Israel |
| IM | Isle of Man |
| IN | India |
| IO | British Indian Ocean Territory |
| IQ | Iraq |
| IR | Iran (Islamic Republic of) |
| IS | Iceland |
| IT | Italy |
| JE | Jersey |
| JM | Jamaica |
| JO | Jordan |
| JP | Japan |
| KE | Kenya |
| KG | Kyrgyzstan |
| KH | Cambodia |
| KI | Kiribati |
| KM | Comoros |
| KN | Saint Kitts and Nevis |
| KP | Korea (Democratic People's Republic of) |
| KR | Korea, Republic of |
| KW | Kuwait |
| KY | Cayman Islands |
| KZ | Kazakhstan |
| LA | Lao People's Democratic Republic |
| LB | Lebanon |
| LC | Saint Lucia |
| LI | Liechtenstein |
| LK | Sri Lanka |
| LR | Liberia |

| | |
|----|--|
| LS | Lesotho |
| LT | Lithuania |
| LU | Luxembourg |
| LV | Latvia |
| LY | Libya |
| MA | Morocco |
| MC | Monaco |
| MD | Moldova, Republic of |
| ME | Montenegro |
| MF | Saint Martin (French part) |
| MG | Madagascar |
| MH | Marshall Islands |
| MK | Macedonia, the former Yugoslav Republic of |
| ML | Mali |
| MM | Myanmar |
| MN | Mongolia |
| MO | Macao |
| MP | Northern Mariana Islands |
| MQ | Martinique |
| MR | Mauritania |
| MS | Montserrat |
| MT | Malta |
| MU | Mauritius |
| MV | Maldives |
| MW | Malawi |
| MX | Mexico |
| MY | Malaysia |
| MZ | Mozambique |
| NA | Namibia |
| NC | New Caledonia |
| NE | Niger |
| NF | Norfolk Island |
| NG | Nigeria |
| NI | Nicaragua |
| NL | Netherlands |
| NO | Norway |
| NP | Nepal |
| NR | Nauru |
| NU | Niue |
| NZ | New Zealand |
| OM | Oman |
| PA | Panama |
| PE | Peru |
| PF | French Polynesia |
| PG | Papua New Guinea |
| PH | Philippines |
| PK | Pakistan |
| PL | Poland |
| PM | Saint Pierre and Miquelon |
| PN | Pitcairn |

| | |
|----|--|
| PR | Puerto Rico |
| PS | Palestine, State of |
| PT | Portugal |
| PW | Palau |
| PY | Paraguay |
| QA | Qatar |
| RE | Réunion |
| RO | Romania |
| RS | Serbia |
| RU | Russian Federation |
| RW | Rwanda |
| SA | Saudi Arabia |
| SB | Solomon Islands |
| SC | Seychelles |
| SD | Sudan |
| SE | Sweden |
| SG | Singapore |
| SH | Saint Helena, Ascension and Tristan da Cunha |
| SI | Slovenia |
| SJ | Svalbard and Jan Mayen |
| SK | Slovakia |
| SL | Sierra Leone |
| SM | San Marino |
| SN | Senegal |
| SO | Somalia |
| SR | Suriname |
| SS | South Sudan |
| ST | Sao Tome and Principe |
| SV | El Salvador |
| SX | Sint Maarten (Dutch part) |
| SY | Syrian Arab Republic |
| SZ | Eswatini |
| TC | Turks and Caicos Islands |
| TD | Chad |
| TF | French Southern Territories |
| TG | Togo |
| TH | Thailand |
| TJ | Tajikistan |
| TK | Tokelau |
| TL | Timor-Leste |
| TM | Turkmenistan |
| TN | Tunisia |
| TO | Tonga |
| TR | Turkey |
| TT | Trinidad and Tobago |
| TV | Tuvalu |
| TW | Taiwan, Province of China |
| TZ | Tanzania, United Republic of |
| UA | Ukraine |
| UG | Uganda |

| | |
|----|--------------------------------------|
| UM | United States Minor Outlying Islands |
| US | United States of America |
| UY | Uruguay |
| UZ | Uzbekistan |
| VA | Holy See |
| VC | Saint Vincent and the Grenadines |
| VE | Venezuela (Bolivarian Republic of) |
| VG | Virgin Islands (British) |
| VI | Virgin Islands (U.S.) |
| VN | Viet Nam |
| VU | Vanuatu |
| WF | Wallis and Futuna |
| WS | Samoa |
| YE | Yemen |
| YT | Mayotte |
| ZA | South Africa |
| ZM | Zambia |
| ZW | Zimbabwe |

2.6.2 DeactivationReasonType

| Value | Name |
|-------|-------------------|
| 1 | Product destroyed |
| 2 | Product stolen |
| 3 | UI destroyed |
| 4 | UI stolen |
| 5 | UI unused |
| 6 | Other |

2.6.3 EventState

| Value | Name | Description |
|-------|-------------------------|--|
| 1 | Received | Initial state. The Data Acquisition component has just received the event and stores it. |
| 2 | Valid | The Data Processing component has verified that the format and contents are correct. |
| 3 | Invalid | The Data Processing component has found some issues regarding the format or the contents. Event is promoted to invalid for further analysis by the storage provider. |
| 4 | Routed | The Data Processing component has routed (or copied) successfully the event to the other Data Storage. |
| 5 | ConsolidationInProgress | The Data Processing attempts to consolidate the information included in the event, if possible. |

| | | |
|---|--------------|--|
| 6 | Consolidated | If the consolidation has been done, it is then promoted to <i>Consolidated</i> . |
| 7 | Orphaned | If the consolidation has not been possible because some prior events were missing, it is promoted to <i>Orphaned</i> . |
| 8 | Cancelled | Final state if the System receives a recall message regarding this event. |

2.6.4 EventType

| Value | Name |
|-------|---|
| REO | Registration of an Economic operator |
| REOD | Registration Data of an Economic operator |
| CEO | Correction for an economic operator identifier code |
| DEO | De-registration of economic operator identifier code |
| RFA | Request for a facility identifier code |
| RFAD | Data for a facility identifier code |
| CFA | Correction of information concerning the facility identifier code |
| DFA | De-registration of facility identifier code |
| RMA | Request for a machine identifier code |
| RMAD | Data for a machine identifier code |
| CMA | Correction of information concerning the machine identifier code |
| DMA | De-registration of machine identifier code |
| ICV | Identifier code verification |
| ULO | Flat file and registry File upload |
| PLO | Partial Flat file and registry transmission |
| ISU | Request for unit level UIs |
| IRU | Response for unit level UIs |
| ISA | Request for reporting the issuance of serial numbers at aggregated level |
| IRA | Response for reporting the issuance of serial numbers at aggregated level |
| IDA | Request for deactivation of UIs |
| EUA | Application of unit level UIs on unit packets |
| EPA | Application of aggregated level UIs on aggregated packaging |
| EDP | Dispatch Event |
| ERP | Reception event |

| | |
|-----|---|
| ETL | Trans-loading event |
| EUD | Message to report an UID disaggregation |
| EVR | Report the delivery carried out with a vending van to retail outlet |
| EIV | Message to report an invoice |
| EPO | Purchase order |
| EPR | Payment record |
| RCL | Recall messages |
| LUP | Download Offline flat file |
| CTM | Connectivity Test Messages |

2.6.5 FacilityType

| Value | Name |
|-------|-----------------------------------|
| 1 | Manufacturing site with warehouse |
| 2 | Standalone warehouse |
| 3 | First retail outlet |
| 4 | Other |

2.6.6 InvoiceType

| Value | Name |
|-------|------------|
| 1 | Original |
| 2 | Correction |
| 3 | Other |

2.6.7 NotificationType

| Value | Name | Description |
|-------|---------------|--|
| 1 | Informative | The notification only includes descriptive information, but not related to any error or abnormal situation. |
| 2 | Warning | The notification includes information about some alert or warning to be considered. |
| 3 | Alarm | The notification includes information about some alarm triggered by the System. |
| 4 | InternalError | The notification includes information about some error that has occurred within the System. |
| 5 | Other | The notification includes information about some other situation, not listed above, that has occurred within the System. |

2.6.8 PaymentType

| Value | Name |
|-------|---------------|
| 1 | Bank transfer |
| 2 | Bank card |
| 3 | Cash |
| 4 | Other |

2.6.9 RecallReasonType

| Value | Name |
|-------|---|
| 1 | Reported event did not materialise |
| 2 | Message contained erroneous information |
| 3 | Other |

2.6.10 RegisterStatus

| Value | Name |
|-------|---------------|
| 1 | Registered |
| 2 | De-registered |

2.6.11 TobaccoProductType

| Value | Name |
|-------|-----------------------|
| 1 | Cigarette |
| 2 | Cigar |
| 3 | Cigarillo |
| 4 | Roll your own tobacco |
| 5 | Pipe tobacco |
| 6 | Waterpipe tobacco |
| 7 | Oral tobacco |
| 8 | Nasal tobacco |
| 9 | Chewing tobacco |
| 10 | Novel tobacco product |
| 11 | Other |

2.6.12 TransportMode

| Value | Name |
|-------|----------------|
| 0 | Other |
| 1 | Sea Transport |
| 2 | Rail transport |
| 3 | Road transport |

| | |
|---|-------------------------------|
| 4 | Air transport |
| 5 | Postal consignment |
| 6 | Fixed transport installations |
| 7 | Inland waterway transport |

2.6.13 UniqueIdentifierState

| Value | Name | Description |
|-------|-------------|--|
| 1 | Generated | Initial state of the unique identifier. The ID Issuer reports the issuance of some codes and the Secondary repository creates a unique identifier record with the initial state (i.e. Generated). |
| 2 | Activated | The unique identifier, after being verified by the manufacturer, matches one unique identifier stored in the Secondary repository under the status "Generated". Additionally, the information contained in the date element of information matches the valid activation date for that unique identifier. |
| 3 | Deactivated | The manufacturer reports the deactivation of that unique identifier. Other cause of deactivation is when manufacturers tries to activate a unique identifier whose date element of information does not match the valid activation date for that unique identifier. |
| 4 | Expired | The Secondary repository promotes to "Expired" the codes that have been issued, but their activation has not been reported within a certain period of time (i.e. expiration time). |
| 5 | Delivered | The distributor or wholesaler reports that this tobacco product item has been successfully dispatched to the final retailer. |

2.6.14 UniqueIdentifierType

| Value | Name | Description |
|-------|---------------------|---|
| 1 | UnitPacket | Unique identifier at unit packet level |
| 2 | AggregatedPackaging | Unique identifier at aggregated packaging level |

3 Messages

3.1 Message types to be exchanged

Described in the Regulation Annex II “Key messages to be sent by the economic operators”
5 categories of messages, related to:

- Identifier codes for economic operators, facilities and machines
- Unique identifiers for unit level UIs and aggregated level UIs
- Recording and transmission of information on product movements
- Transactional events
- Recalls

The following table summarizes the messages.

| Message Type | Annex II Reference | Message description |
|--------------|--------------------|--|
| REO | (1.1) | Registration of an Economic operator |
| REOD | | Registration Data of an Economic operator |
| CEO | (1.2) | Correction for an economic operator identifier code |
| DEO | (1.3) | De-registration of economic operator identifier code |
| RFA | (1.4) | Request for a facility identifier code |
| RFAD | | Data for a facility identifier code |
| CFA | (1.5) | Correction of information concerning the facility identifier code |
| DFA | (1.6) | De-registration of facility identifier code |
| ISU | (2.1) | Request for unit level UIs |
| IRU | | Response for unit level UIs |
| IRA | (2.2) | Request for reporting the issuance of serial numbers at aggregated level |
| ISA | | Request for reporting the issuance of serial numbers at aggregated level |
| IDA | (2.3) | Request for deactivation of UIs |
| EUA | (3.1) | Application of unit level UIs on unit packets |
| EPA | (3.2) | Application of aggregated level UIs on aggregated packaging |
| EDP | (3.3) | Dispatch Event |
| ERP | (3.4) | Reception event |
| ETL | (3.5) | Trans-loading event |
| EUD | (3.6) | Message to report an UID disaggregation |
| EVR | (3.7) | Report the delivery carried out with a vending van to retail outlet |
| EIV | (4.1) | Message to report an invoice |
| EPO | (4.2) | Purchase order |

| | | |
|-----|-------|-----------------|
| EPR | (4.3) | Payment record |
| RCL | (5.0) | Recall messages |

3.1.1 Optional II2MN II2DW interfaces

The ID Issuer defines the communication between the EO and the ID issuer corresponding to interfaces II2MN and II2DW.

The proposed messages presented in this Data Dictionary are sample messages to illustrate the overall flow of data from the EO to the Secondary repository. These messages should be considered as a Guideline with no obligation of implementation.

All messages part of the II2MN and II2DW interfaces are marked as optional in this document.

3.1.2 Message and endpoints

| | | Message support |
|-------------------------|-----------------------------|---|
| Router Endpoints | | |
| Router | The authentication endpoint | |
| Router | The resource endpoint | IRU,IRA,IDA,EUA,EPA,EDP,ERP,ETL,EUD,EVR,EIV,EPO,EPR,RCL |
| Router | The flat file upload | ULO, PLO |

3.2 Common schema elements

3.2.1 Basic information block concerning the request

| Basic information block concerning the request - schema | | | | | |
|---|--|-------------------------------|-------------|----------|---|
| Field | Description | Data Type | Cardinality | Priority | Values |
| Message_Type | The identifier of the type of message | Text | S | M | See above types of messages list |
| Code | The internal code of acknowledgment of the message. Used for recall too. | Text | S | M | |
| RejectionData | The failure data recorded in the primary should the validation fail. | FailureData (See below table) | S | O | This should only be filled if the primary validation fails. |

| RejectionData - schema | | | | | |
|------------------------|--|-----------|-------------|----------|--------|
| Field | Description | Data Type | Cardinality | Priority | Values |
| ResponseText | The response of the primary | Text | S | M | |
| Errors | List of the errors. Array containing Error_Code, Error_Descr, InternalId | Text | S | M | |

If the secondary repository receives a message with this “RejectionData” non null, it will not process the message and will instead record / audit the failure. This for later analysis, used to find possible illicit trade.

3.2.2 Basic information block concerning the response

| Basic information block concerning the response - schema | | | | | |
|--|---|-----------|-------------|----------------|---|
| Field | Description | Data Type | Cardinality | Priority | Values |
| Message_Type | The identifier of the type of message that the response refers to | Text | S | M | See above types of messages list |
| Error | Indicates the failure of the message reception | Boolean | S | M | 0 – No 1- Yes |
| Errors | Array containing Error_Code, Error_Descr, InternalId | Text | S | M if Error = 1 | System error catalogue at Error! Reference source not found. |
| Code | Unique identifier of the message. Used for recall too. | Text | S | M | |
| Checksum | The calculated checksum of the data received | Text | S | M | |

3.2.3 Common Error codes

| HTTP status | Error Code | Error Description |
|-------------|------------------------|---|
| 401 | SECURITY_INVALID_TOKEN | Invalid security token |
| 401 | SECURITY_EXPIRED_TOKEN | Expired security token |
| 400 | INVALID_REQUEST_FORMAT | This error is returned when at least one of the mandatory fields are missing. |
| 400 | INVALID_MESSAGE_TYPE | When the field "Message_Type" is out of the defined list. |
| 400 | INVALID_INPUT_FORMAT | When the body of the message doesn't contain a valid JSON. |
| 500 | SYSTEM_ERROR | Internal system error. |

3.3 Identifier codes for economic operators, facilities and machines messages

3.3.1 REO - (1.1) Registration of an Economic operator

3.3.1.1 Description

Submit the information for the first registration of the economic operator. Please note that this message is the REO message that is sent to the id issuer, but with the id issuer EO_ID added.

3.3.1.2 Description of the fields

| registration of economic operator – request | | | | | |
|---|-------------------------------------|--|-------------|----------|--------------------|
| Field | Description | Data Type | Cardinality | Priority | Values |
| BasicInfo_Req | Block of basic information elements | Component << Basic Information Request >> | S | M | Message_Type = REO |

| | | | | | |
|------------------|--|----------|---|----------------------------|--|
| EO_Name1 | Economic operator's registered name | Text | S | M | |
| EO_Name2 | Economic operator's alternative or abridged name | Text | S | O | |
| EO_Address | Economic operator's address – street name, house number, postal code, city | Text | S | M | |
| EO_CountryReg | Economic operator's country of registration | Country | S | M | See Country |
| EO_Email | Economic operator's email address; used to inform about registration process, incl. subsequent changes and other required correspondence | Text | S | M | |
| VAT_R | Indication of the VAT registration status | Boolean | S | M | 0 – No VAT registration 1 – VAT number exists |
| VAT_N | Economic operator's VAT number | Text | S | M, if VAT_R = 1 | |
| TAX_N | Economic operator's tax registration number | Text | S | M, if VAT_R = 0 | |
| EO_ExciseNumber1 | Indication if the economic operator has an excise number issued by the competent authority for the purpose of identification of persons/premises | Boolean | S | M | 0 – No SEED number 1 – SEED number exists |
| EO_ExciseNumber2 | Economic operator's excise number issued by the competent authority for the purpose of identification of persons/premises | SEED | S | M, if EO_ExciseNumber1 = 1 | |
| OtherEOID_R | Indication if the economic operator has been allocated an identifier by another ID Issuer | Boolean | S | M | 0 – No 1 – Yes |
| OtherEOID_N | Economic operator identifier codes allocated by other ID Issuers | EOID | M | M, if OtherEOID_R = 1 | |
| Reg_3RD | Indication if the registration is made on behalf of a retail outlet operator not otherwise involved in the tobacco trade | Boolean | S | M | 0 – No 1 – Yes |
| Reg_EOID | Identifier of the economic operator that acts on behalf of a retail outlet operator not otherwise involved in the tobacco trade | EOID | S | M, if Reg_3RD = 1 | |
| EO_OtherID | Optional identifier | Text(50) | S | O | |

3.3.1.3 Response:

| Field | Description | Data Type | Cardinality | Priority | Values |
|----------------|-------------------------------------|---|-------------|----------|--------------------|
| BasicInfo_Resp | Block of basic information elements | Component << Basic Information Response >> | S | M | Message_Type = REO |

3.3.1.4 Request sample

```
{
  "EO_ID": "QCUKR+1AB020054",
  "EO_Name1": "Example Legal Entity",
  "EO_Name2": "",
  "EO_Address": "59 Legal Street",
  "EO_CountryReg": "DE" ,
  "EO_Email": "email@test.com",
  "VAT_R": true,
  "VAT_N": "VATNumber 1",
  "TAX_N": "Tax",
  "EO_ExciseNumber1": true,
  "EO_ExciseNumber2": "LA111FD",
  "OtherEOID_R": true,
  "OtherEOID_N": [ "" ],
  "Reg_3RD": false,
  "Reg_EOID": "",
  "EO_OtherID": "GLNSAMPLE",
  "Message_Type": "REO",
  "Code": "873345b2-882f-4064-91f0-90669b46c30a"
  "EO_OtherID": "XFG6GN5J5JG98VJKFHJKKJ"
}
```

3.3.1.5 Successful response sample

HTTP Status 202

```
{
  "Code": "873345b2-882f-4064-91f0-90669b46c30a",
  "Message_Type": "REO",
  "Error": false,
  "Errors": null,
  "Checksum": "DFG65H"
}
```

3.3.1.6 Error response sample

Processing errors

| HTTP status | | |
|----------------------------|----------------|--|
| << Common response code >> | | |
| 400 | ALREADY_EXISTS | Indicated that the CRUD action in add a new entity failed, as the item already exist. This is when checking of the item id already exists. |

3.3.2 REOD - Data Registration of an Economic operator

3.3.2.1 Description

The REOD message is the response to the REO message. This message can be issued in an asynchronous manner and contains the EO_ID.

3.3.2.2 Description of the fields

| registration of economic operator – request | | | | | |
|---|--|--|-------------|----------------------------|--|
| Field | Description | Data Type | Cardinality | Priority | Values |
| BasicInfo_Req | Block of basic information elements | Component << Basic Information Request >> | S | M | Message_Type = REOD |
| EO_ID | Economic operator's registered ID | EOID | S | M | |
| EO_Name1 | Economic operator's registered name | Text | S | M | |
| EO_Name2 | Economic operator's alternative or abridged name | Text | S | O | |
| EO_Address | Economic operator's address – street name, house number, postal code, city | Text | S | M | |
| EO_CountryReg | Economic operator's country of registration | Country | S | M | See Country |
| EO_Email | Economic operator's email address; used to inform about registration process, incl. subsequent changes and other required correspondence | Text | S | M | |
| VAT_R | Indication of the VAT registration status | Boolean | S | M | 2 – No VAT registration 3 – VAT number exists |
| VAT_N | Economic operator's VAT number | Text | S | M, if VAT_R = 1 | |
| TAX_N | Economic operator's tax registration number | Text | S | M, if VAT_R = 0 | |
| EO_ExciseNumber1 | Indication if the economic operator has an excise number issued by the competent authority for the purpose of identification of persons/premises | Boolean | S | M | 2 – No SEED number 3 – SEED number exists |
| EO_ExciseNumber2 | Economic operator's excise number issued by the competent authority for the purpose of identification of persons/premises | SEED | S | M, if EO_ExciseNumber1 = 1 | |
| OtherEOID_R | Indication if the economic operator has been allocated an identifier by another ID Issuer | Boolean | S | M | 2 – No 3 – Yes |
| OtherEOID_N | Economic operator identifier codes allocated by other ID Issuers | EOID | M | M, if OtherEOID_R = 1 | |

| | | | | | |
|------------|---|----------|---|-------------------|-------------------|
| Reg_3RD | Indication if the registration is made on behalf of a retail outlet operator not otherwise involved in the tobacco trade | Boolean | S | M | 2 – No 3 – Yes |
| Reg_EOID | Identifier of the economic operator that acts on behalf of a retail outlet operator not otherwise involved in the tobacco trade | EOID | S | M, if Reg_3RD = 1 | |
| EO_OtherID | Optional identifier | Text(50) | S | O | |
| EO_CODE | Economic operator's confirmation code provided in response to the registration of economic operator | Text | S | M | |

3.3.2.3 Response:

| Field | Description | Data Type | Cardinality | Priority | Values |
|----------------|-------------------------------------|--|-------------|----------|---------------------|
| BasicInfo_Resp | Block of basic information elements | Component << Basic Information Response >> | S | M | Message_Type = REOD |

3.3.2.4 Request sample

```
{
  "EO_ID": "QCUKR+1AB020054",
  "EO_Name1": "Example Legal Entity",
  "EO_Name2": "",
  "EO_Address": "59 Legal Street",
  "EO_CountryReg": "DE" ,
  "EO_Email": "email@test.com",
  "VAT_R": true,
  "VAT_N": "VATNumber 1",
  "TAX_N": "Tax",
  "EO_ExciseNumber1": true,
  "EO_ExciseNumber2": "LA111FD",
  "OtherEOID_R": true,
  "OtherEOID_N": [ "" ],
  "Reg_3RD": false,
  "Reg_EOID": "",
  "EO_OtherID": "GLNSAMPLE",
  "Message_Type": "REO",
  "Code": "873345b2-882f-4064-91f0-90669b46c30a",
  "EO_Code": "873345b2-882f-4064-91f0-90669b46c30a"
  "EO_OtherID": "XFG6GN5J5JG98VJKFHJJKJ"
}
```

3.3.2.5 Successful response sample

HTTP Status 202

```
{
  "Code": " 6854f9a6-a2b2-4c08-8000-0173f3c35567",
  "Message_Type": "REOD",
  "Error": false,
  "Errors": null,
}
```

```
"Checksum": "G6HF5H"
}
```

3.3.2.6 Error response sample

Processing errors

| HTTP status | | |
|----------------------------|--|--|
| << Common response code >> | | |
| | | |

3.3.3 CEO – (1.2) Correction for an economic operator identifier code

3.3.3.1 Description

Submit the information of an economic operator known to the repository in order to update 1 or more properties. This information in entirety will over write the previous data held regarding the master data of this economic operator. Links (for example dispatches) to / from this EO_ID will be maintained.

3.3.3.2 Description of the fields

| Field | Description | Data Type | Cardinality | Priority | Values |
|------------------|--|--|-------------|-----------------------------|--|
| BasicInfo_Req | Block of basic information elements | Component << Basic Information Request >> | S | M | Message_Type = CEO |
| EO_ID | Economic operator identifier code | EOID | S | M | |
| EO_CODE | Economic operator's confirmation code provided in response to the registration of economic operator | Text | S | M | |
| EO_Name1 | Economic operator's registered name | Text | S | M | |
| EO_Name2 | Economic operator's alternative or abridged name | Text | S | O | |
| EO_Address | Economic operator's address – street name, postal code and city | Text | S | M | |
| EO_CountryReg | Economic operator's country of registration | Country | S | M | See Country |
| EO_Email | Economic operator's email address – used to inform about registration process, incl. subsequent changes | Text | S | M | |
| VAT_R | Indication of the VAT registration status | Boolean | S | M | 0 – No VAT registration 1 – VAT number exists |
| VAT_N | Economic operator's VAT number | Text | S | M, if VAT_R = 1 | |
| TAX_N | Economic operator's tax registration number | Text | S | M, if VAT_R = 0 | |
| EO_ExciseNumber1 | Indication if the economic operator has an excise number issued by the competent authority for the purpose of identification of persons/premises | Boolean | S | M | 0 – No SEED number 1 – SEED number exists |
| EO_ExciseNumber2 | Economic operator's excise number issued by the competent authority for the purpose of identification of persons/premises | SEED | S | M, if EO_ExciseNumber 1 = 1 | |

| | | | | | |
|-------------|---|---------|---|--------------------------|-------------------|
| OtherEOID_R | Indication if the economic operator has been allocated an identifier by another ID Issuer | Boolean | S | M | 0 – No 1 – Yes |
| OtherEOID_N | Economic operator identifier codes allocated by other ID Issuers | EOID | M | M, if OtherEOID_R = 1 | |
| Reg_3RD | Indication if the registration is made on behalf of a retail outlet operator not otherwise involved in the tobacco trade | Boolean | S | M | 0 – No 1 – Yes |
| Reg_EOID | Identifier of the economic operator that acts on behalf of a retail outlet operator not otherwise involved in the tobacco trade | EOID | S | M, if Reg_3RD = 1 | |

3.3.3.3 Response:

| correction of information concerning the economic operator – response | | | | | |
|---|-------------------------------------|---|-------------|----------|--------------------|
| Field | Description | Data Type | Cardinality | Priority | Values |
| BasicInfo_Resp | Block of basic information elements | Component << Basic Information Response >> | S | M | Message_Type = CEO |

3.3.3.4 Request sample

```
{
  "Message_Type": "CEO",
  "Code": "873345b2-882f-4064-91f0-90669b46c30a",
  "EO_ID": "QCUKR+1AB020054",
  "EO_CODE": "FGT6H",
  "EO_Name1": "registrationname",
  "EO_Name2": "",
  "EO_Address": "address 1",
  "EO_CountryReg": 27,
  "EO_Email": "email@test.com",
  "VAT_R": true,
  "VAT_N": "VATNumber 1",
  "TAX_N": "Tax",
  "EO_ExciseNumber1": true,
  "EO_ExciseNumber2": "LA111FD",
  "OtherEOID_R": true,
  "OtherEOID_N": [ "" ],
  "Reg_3RD": false,
  "Reg_EOID": ""
}
```

3.3.3.5 Successful response sample

HTTP Status 202

```
{
  "Code": "873345b2-882f-4064-91f0-90669b46c30a",
  "Message_Type": "CEO",
  "Error": false,
  "Errors": null,
  "Checksum": "G6HF5H"
}
```

3.3.3.6 Error response sample

Processing errors

| HTTP status |
|----------------------------|
| << Common response code >> |

3.3.4 DEO – (1.3) De-registration of economic operator identifier code.

3.3.4.1 Description

De-registers a previously known operator identifier for a given EO_ID

3.3.4.2 Description of the fields

| De-registration of economic operator – request | | | | | |
|--|---|--|-------------|-------------------|--------------------|
| Field | Description | Data Type | Cardinality | Priority | Values |
| BasicInfo_Req | Block of basic information elements | Component << Basic Information Request >> | S | M | Message_Type = DEO |
| EO_ID | Economic operator identifier code | E OID | S | M | |
| EO_CODE | Economic operator's confirmation code provided in response to the registration of economic operator | Text | S | M | |
| Reg_3RD | Indication if the registration is made on behalf of a retail outlet operator not otherwise involved in the tobacco trade | Boolean | S | M | 0 – No 1 – Yes |
| Reg_EOID | Identifier of the economic operator that acts on behalf of a retail outlet operator not otherwise involved in the tobacco trade | E OID | S | M, if Reg_3RD = 1 | |

3.3.4.3 Response:

| correction of information concerning the economic operator – response | | | | | |
|---|-------------------------------------|---|-------------|----------|--------------------|
| Field | Description | Data Type | Cardinality | Priority | Values |
| BasicInfo_Resp | Block of basic information elements | Component << Basic Information Response >> | S | M | Message_Type = DEO |

3.3.4.4 Request sample

```
{
  "EO_ID": "QCUKR+1AB020054",
  "EO_CODE": "EO1_CODE",
  "Req_3RD": false,
  "Req_EOID": "Machine Id A",
  "Code": "873345b2-882f-4064-91f0-90669b46c30a",
  "Message_Type": "DEO",
}
```

3.3.4.5 Successful response sample

HTTP Status 202

```
{
  "Code": "873345b2-882f-4064-91f0-90669b46c30a",
  "Message_Type": "DEO",
  "Error": false,
  "Errors": null,
  "Checksum": "G6HF5H"
}
```

3.3.4.6 Error response sample

Processing errors

| HTTP status | | |
|-------------|----------------------------|--|
| | << Common response code >> | |

3.3.5 RFAD – (1.4) Request for a facility identifier code

3.3.5.1 Description

Add a previously unregistered facility. Defined as unseen by the existence of the facility id in the repository.

3.3.5.2 Description of the fields

Request:

| Registration of facility – request | | | | | |
|------------------------------------|---|--|-------------|---------------------------|---|
| Field | Description | Data Type | Cardinality | Priority | Values |
| BasicInfo_Req | Block of basic information elements | Component << Basic Information Request >> | S | M | Message_Type = RFAD |
| EO_ID | Economic operator identifier code | EOID | S | M | |
| F_ID | Facility code from the RFA code issuer call | FID | S | M | |
| EO_CODE | Economic operator's confirmation code provided in response to the registration of economic operator | Text | S | M | |
| F_Address | Facility's address – street name, house number, postal code and city | Text | S | M | |
| F_Country | Facility's country | Country | S | M | See Country |
| F_Type | Type of facility | Integer | S | M | See FacilityType |
| F_Type_Other | Description of other facility type | Text | S | M, if F_Type = 4 | |
| F_Status | Indication if a part of the facility has a bonded warehouse status | Boolean | S | M | 0 – No 1 – Yes |
| F_ExciseNumber1 | Indication if the facility has an excise number issued by the competent authority for the purpose of identification of persons/premises | Boolean | S | M | 0 – No SEED number 1 – SEED number exists |
| F_ExciseNumber2 | Facility's excise number issued by the competent authority for the purpose of identification of persons/premises | SEED | S | M, if F_ExciseNumber1 = 1 | |
| OtherFID_R | Indication if the facility has been allocated an identifier by another ID Issuer | Boolean | S | M | 0 – No 1 – Yes (possible only for non-EU facilities) |
| OtherFID_N | Facility identifier codes allocated by other ID Issuers | FID | M | M, if OtherFID | |

| | | | | | |
|----------|---|---------|---|-------------------|---|
| | | | | _R = 1 | |
| Reg_3RD | Indication if the registration is made on behalf of a retail outlet operator not otherwise involved in the tobacco trade | Boolean | S | M | 0 – No 1 – Yes (possible only if F_Type = 3) |
| Reg_EOID | Identifier of the economic operator that acts on behalf of a retail outlet operator not otherwise involved in the tobacco trade | EOID | S | M, if Reg_3RD = 1 | |

3.3.5.3 Response

| registration of facility – response | | | | | |
|-------------------------------------|-------------------------------------|--|-------------|----------------|---------------------|
| Field | Description | Data Type | Cardinality | Priority | Values |
| BasicInfo_Resp | Block of basic information elements | Component << Basic Information Response >> | S | M | Message_Type = RFAD |
| F_ID | Facility's identifier registered | FID | S | M if Error = 0 | |

3.3.5.4 Request sample

```
{
  "EO_ID": "QCUKR+1AB020054",
  "EO_CODE": "EO1_CODE",
  "F_ID": "QCUKR<1AB020054000048",
  "F_Address": "Machine Id A",
  "F_Country": 2,
  "F_Type": "RFA2",
  "F_Type_Other": null,
  "F_Status": false,
  "F_ExciseNumber1": false,
  "F_ExciseNumber2": null,
  "OtherFID_R": false,
  "OtherFID_N": [],
  "Reg_3RD": false,
  "Reg_EOID": null,
  "Code": "873345b2-882f-4064-91f0-90669b46c30a",
  "Message_Type": "RFAD"
}
```

3.3.5.5 Successful response sample

HTTP Status 202

```
{
  "Code": "873345b2-882f-4064-91f0-90669b46c30a",
  "Message_Type": "RFAD",
  "Error": false,
  "Errors": null,
  "Checksum": "G6HF5H"
}
```

3.3.5.6 Error response sample

Processing errors

| HTTP status |
|----------------------------|
| << Common response code >> |

3.3.6 CFA – (1.5) Correction of information concerning the facility identifier code

3.3.6.1 Description

Submit the information of a facility known to the repository in order to update one or more properties. This information in entirety will over write the previous data held regarding the master data of this facility. Links (for example dispatches) to / from this F_ID will be maintained.

3.3.6.2 Description of the fields

| correction of information concerning the facility – request | | | | | |
|---|---|--|-------------|------------------|--------------------|
| Field | Description | Data Type | Cardinality | Priority | Values |
| BasicInfo_Req | Block of basic information elements | Component << Basic Information Request >> | S | M | Message_Type = CFA |
| EO_ID | Economic operator identifier code | EOID | S | M | |
| EO_CODE | Economic operator's confirmation code provided in response to the registration of economic operator | Text | S | M | |
| F_ID | Facility identifier code | FID | S | M | |
| F_Address | Facility's address – street name, postal code and city | Text | S | M | |
| F_Country | Facility's country | Country | S | M | See Country |
| F_Type | Type of facility | Integer | S | M | See FacilityType |
| F_Type_Other | Description of other facility type | Text | S | M, if F_Type = 4 | |

| | | | | | |
|-----------------|---|---------|---|---------------------------|---|
| F_Status | Indication if a part of the facility has a bonded warehouse status | Boolean | S | M | 0 – No 1 – Yes |
| F_ExciseNumber1 | Indication if the facility has an excise number issued by the competent authority for the purpose of identification of persons/premises | Boolean | S | M | 0 – No SEED number 1 – SEED number exists |
| F_ExciseNumber2 | Facility's excise number issued by the competent authority for the purpose of identification of persons/premises | SEED | S | M, if F_ExciseNumber1 = 1 | |
| OtherFID_R | Indication if the facility has been allocated an identifier by another ID Issuer | Boolean | S | M | 0 – No 1 – Yes (possible only for non-EU facilities) |
| OtherFID_N | Facility identifier codes allocated by other ID Issuers | FID | M | M, if OtherFID_R = 1 | |
| Reg_3RD | Indication if the registration is made on behalf of a retail outlet operator not otherwise involved in the tobacco trade | Boolean | S | M | 0 – No 1 – Yes (possible only if F_Type = 3) |
| Reg_EOID | Identifier of the economic operator that acts on behalf of a retail outlet operator not otherwise involved in the tobacco trade | EOID | S | M, if Reg_3RD = 1 | |

3.3.6.3 Response

| correction of information concerning the facility – response | | | | | |
|--|-------------------------------------|--|-------------|----------|--------------------|
| Field | Description | Data Type | Cardinality | Priority | Values |
| BasicInfo_Resp | Block of basic information elements | Component << Basic Information Response >> | S | M | Message_Type = CFA |

3.3.6.4 Request sample

```
{
  "EO_ID": "QCUKR+1AB020054",
  "EO_CODE": "EO1_CODE",
  "F_ID": "QCUKR<1AB020054000048",
  "F_Address": "Address A",
  "F_Country": 2,
  "F_Type": "CFA",
  "F_Type_Other": null,
  "F_Status": false,
  "F_ExciseNumber1": false,
  "F_ExciseNumber2": null,
  "OtherFID_R": false,
  "OtherFID_N": [],
  "Reg_3RD": false,
  "Reg_EOID": null,
  "Code": "873345b2-882f-4064-91f0-90669b46c30a",
  "Message_Type": "CFA"
}
```

3.3.6.5 Successful response sample

HTTP Status 202

```
{
  "Code": "873345b2-882f-4064-91f0-90669b46c30a",
  "Message_Type": "CFA",
  "Error": false,
  "Errors": null,
  "Checksum": "G6HF5H"
}
```

3.3.6.6 Error response sample

Processing errors

| HTTP status | | |
|-------------|----------------------------|--|
| | << Common response code >> | |

3.3.7 DFA – (1.6) De-registration of facility identifier code

3.3.7.1 Description

De-registers a previously known facility for a given F_ID

3.3.7.2 Description of the fields

| de-registration of facility – request | | | | | |
|---------------------------------------|---|---|-------------|-------------------|--------------------|
| Field | Description | Data Type | Cardinality | Priority | Values |
| BasicInfo_Req | Block of basic information elements | Component << Basic Information Request >> | S | M | Message_Type = DFA |
| EO_ID | Economic operator identifier code | E OID | S | M | |
| EO_CODE | Economic operator's confirmation code provided in response to the registration of economic operator | Text | S | M | |
| F_ID | Facility identifier code | FID | S | M | |
| Reg_3RD | Indication if the deregistration is made on behalf of a retail outlet operator not otherwise involved in the tobacco trade | Boolean | S | M | 0 – No 1 – Yes |
| Reg_EOID | Identifier of the economic operator that acts on behalf of a retail outlet operator not otherwise involved in the tobacco trade | E OID | S | M, if Reg_3RD = 1 | |

3.3.7.3 Response:

| de-registration of facility – response | | | | | |
|--|-------------------------------------|--|-------------|----------|--------------------|
| Field | Description | Data Type | Cardinality | Priority | Values |
| BasicInfo_Resp | Block of basic information elements | Component << Basic Information Response >> | S | M | Message_Type = DFA |

3.3.7.4 Request sample

```
{
  "EO_ID": "QCUKR+1AB020054",
  "EO_CODE": "DFA",
  "F_ID": "QCUKR<1AB020054000048",
  "Reg_3RD": false,
  "Reg_EOID": null,
  "Code": "873345b2-882f-4064-91f0-90669b46c30a",
  "Message_Type": "DFA"
}
```

3.3.7.5 Successful response sample

HTTP Status 202

```
{
  "Code": "873345b2-882f-4064-91f0-90669b46c30a",
  "Message_Type": "DFA",
  "Error": false,
  "Errors": null,
  "Checksum": "G6HF5H"
}
```

3.3.7.6 Error response sample

Processing errors

| HTTP status | | |
|----------------------------|--|--|
| << Common response code >> | | |

3.4 Unique identifiers Messages

3.4.1 ISU – (2.1) Request for unit level Uls

3.4.1.1 Description

Request for reporting the issuance of serial numbers at unit packet level

3.4.1.2 Description of the fields

| Request for unit level Uls – request | | | | | |
|--------------------------------------|--|---|-------------|---|---|
| Field | Description | Data Type | Cardinality | Priority | Values |
| BasicInfo_Req | Block of basic information elements | Component << Basic Information Request >> | S | M | Message_Type = ISU |
| Event_Time | Intended time of event occurrence | Time(s) | S | M | |
| EO_ID | Economic operator identifier code of the submitting entity (either EU manufacturer or EU importer) | EOID | S | M | |
| F_ID | Facility identifier code | FID | S | M | |
| Process_Type | Indication if the production process involves machinery | Boolean | S | M | 0 – No (only for fully hand made products) 1 – Yes |
| M_ID | Machine identifier code | MID | S | M | |
| P_Type | Type of tobacco product | Integer | S | M | See TobaccoProductType |
| P_OtherType | Description of other type of tobacco product | Text | S | M, if P_Type = 12 (other tobacco product) | |
| P_CN | Combined Nomenclature (CN) code | Text | S | M, if Intended_Market is an EU country | |
| P_weight | Average gross weight of unit packet, including packaging, in grams with 0,1 gram accuracy | Decimal | S | M | |
| P_Brand | Brand of tobacco product | Text | S | M | |
| TP_ID | The identification number of the product used in the EU-CEG system. | TPID | S | M, if Intended_Market is an EU country | |
| TP_PN | Tobacco product number used in the EU-CEG system | PN | S | M, if Intended_Market is an EU country | |
| Intended_Market | Intended country of retail sale. | Country | S | M | |
| Intended_Route 1 | Indication if the product is intended to be moved across country borders with terrestrial transport. | Boolean | S | M | 0 – No 1 – Yes |
| Intended_Route 2 | The first country of terrestrial transport after the product leaves the Member State of | Country | S | M, if Intended_Route1 = 1 | |

| Request for unit level UIs – request | | | | | |
|--------------------------------------|---|-----------|-------------|----------|-------------------|
| Field | Description | Data Type | Cardinality | Priority | Values |
| | manufacturing or the Member State of importation. | | | | |
| Import | Indication if the product is imported into the EU | Boolean | S | M | 0 – No 1 – Yes |
| Req_Quantity | Requested quantity of unit packet level UIs | Integer | S | M | |
| P_OtherID | Optional Product ID | Text(20) | S | O | |

3.4.1.3 Response:

| Request for unit level UIs – response | | | | | |
|---------------------------------------|-------------------------------------|--|-------------|----------|-----------------------|
| Field | Description | Data Type | Cardinality | Priority | Values |
| BasicInfo_Resp | Block of basic information elements | Component << Basic Information Response >> | S | M | Message_Type = IRU |

3.4.1.4 Request sample

```
{
  "EO_ID": "QCUKR+1AB020054",
  "Event_Time" : "2018-08-23T07:32:20.7878086+00:00",
  "F_ID": "QCUKR<1AB020054000049"
  "Process_Type": false,
  "M_ID": "Machine Id A",
  "P_Type": 2,
  "P_OtherType": null,
  "P_CN": "FG7H68FHF"
  "P_Brand": "Product brand A",
  "P_Weight": 10.0,
  "TP_ID": "1234",
  "TP_PN": "1234",
  "Intended_Market": "BG",
  "Intended_Route1": true,
  "Intended_Route2": "BG",
  "Import": false,
  "Req_Quantity": 2,
  "P_OtherID": "GTINSAMPLE",
  "Code": "6854f9a6-a2b2-4c08-8000-0173f3c35567",
  "Message_Type": "ISU"
}
```

3.4.1.5 Successful response sample

HTTP Status 202

```
{
  "Code": "873345b2-882f-4064-91f0-90669b46c30a",
  "Message_Type": "IRU",
  "Error": false,
  "Errors": null,
  "Checksum": "G6HF5H"
}
```

3.4.1.6 Error response sample

Processing errors

| HTTP status | | |
|-------------|----------------------------|--|
| | << Common response code >> | |
| | | |

Error body sample

```
{
  "Code": "873345b2-882f-4064-91f0-90669b46c30a",
  "Message_Type": null,
  "Error": true,
  "Errors": [
    {
      "Error_InternalID": "yndkFz7TBE0706frD38hzA",
      "Error_Code": "INVALID_REQUEST_FORMAT",
      "Error_Descr": "The EconomicOperatorIdentifier field is required."
    }
  ]
}
```

3.4.2 IRU – Message to report the issuance of serial numbers at unit packet level

3.4.2.1 Description

Request for reporting the issuance of serial numbers at unit packet level

3.4.2.2 Description of the fields

| request for reporting the issuance of serial numbers at unit packet level – request | | | | | |
|---|--|---|-------------|---|---|
| Field | Description | Data Type | Cardinality | Priority | Values |
| BasicInfo_Req | Block of basic information elements | Component << Basic Information Request >> | S | M | Message_Type = IRU |
| Event_Time | Intended time of event occurrence | Time(s) | S | M | |
| EO_ID | Economic operator identifier code of the submitting entity (either EU manufacturer or EU importer) | EOID | S | M | |
| F_ID | Facility identifier code | FID | S | M | |
| Process_Type | Indication if the production process involves machinery | Boolean | S | M | 0 – No (only for fully hand made products) 1 – Yes |
| M_ID | Machine identifier code | MID | S | M | |
| P_Type | Type of tobacco product | Integer | S | M | See TobaccoProductType |
| P_OtherType | Description of other type of tobacco product | Text | S | M, if P_Type = 12 (other tobacco product) | |
| P_CN | Combined Nomenclature (CN) code | Text | S | O | |
| P_Brand | Brand of tobacco product | Text | S | M | |
| TP_ID | The identification number of the product used in the EU-CEG system. | TPID | S | M, if Intended_Market is an EU country | |

| request for reporting the issuance of serial numbers at unit packet level – request | | | | | |
|---|---|-----------|-------------|--|-------------------|
| Field | Description | Data Type | Cardinality | Priority | Values |
| TP_PN | Tobacco product number used in the EU-CEG system | PN | S | M, if Intended_Market is an EU country | |
| Intended_Market | Intended country of retail sale. | Country | S | M | |
| Intended_Route1 | Indication if the product is intended to be moved across country borders with terrestrial transport. | Boolean | S | M | 0 – No 1 – Yes |
| Intended_Route2 | The first country of terrestrial transport after the product leaves the Member State of manufacturing or the Member State of importation. | Country | S | M, if Intended_Route1 = 1 | |
| Import | Indication if the product is imported into the EU | Boolean | S | M | 0 – No 1 – Yes |
| Req_Quantity | Requested quantity of unit packet level UIs | Integer | S | M | |
| P_OtherID | Optional Product ID | Text(20) | S | O | |
| upUI | List of unit packet level UIs issued | upUI(s) | M | M | |

3.4.2.3 Response:

| request for reporting the issuance of serial numbers at unit packet level – response | | | | | |
|--|-------------------------------------|--|-------------|----------|--------------------|
| Field | Description | Data Type | Cardinality | Priority | Values |
| BasicInfo_Resp | Block of basic information elements | Component << Basic Information Response >> | S | M | Message_Type = IRU |

3.4.2.4 Request sample

```
{
  "EO_ID": "QCUKR+1AB020054",
  "F_ID": "QCUKR<1AB020054000049",
  "Event_Time" : "2018-08-23T07:32:20.7878086+00:00",
  "Process_Type": false,
  "M_ID": "Machine Id A",
  "P_Type": 2,
  "P_OtherType": null,
  "P_CN": "FG7H68FHF",
  "P_Brand": "Product brand A",
  "P_Weight": 10.0,
  "TP_ID": "1234",
  "TP_PN": "1234",
  "Intended_Market": "BG",
  "Intended_Route1": true,
  "Intended_Route2": "BG",
  "Import": false,
  "Req_Quantity": 2,
  "upUI": [<upUI>],
  "Code": "873345b2-882f-4064-91f0-90669b46c30a",
  "Message_Type": "IRU"
}
```

3.4.2.5 Successful response sample

HTTP Status 202

```
{
  "Code": "873345b2-882f-4064-91f0-90669b46c30a",
  "Message_Type": "IRU",
  "Error": false,
  "Errors": null,
  "Checksum": "G6HF5H"
}
```

3.4.2.6 Error response sample

Processing errors

| HTTP status | | |
|-------------|----------------------------|--|
| | << Common response code >> | |
| | | |

Error body sample

```
{
  "Code": null,
  "Message_Type": null,
  "Error": true,
  "Errors": [
    {
      "Error_InternalID": "yndkFz7TBE0706frD38hzA",
      "Error_Code": "INVALID_REQUEST_FORMAT",
      "Error_Descr": "The EconomicOperatorIdentifier field is required."
    }
  ]
}
```

3.4.3 ISA – (2.2) Request for aggregated level Uls

3.4.3.1 Description

Request for reporting the issuance of serial numbers at aggregated level

3.4.3.2 Description of the fields

| request for reporting the issuance of serial numbers at aggregated level – request | | | | | |
|--|--|--|-------------|----------|--------------------|
| Field | Description | Data Type | Cardinality | Priority | Values |
| BasicInfo_Req | Block of basic information elements | Component << Basic Information Request >> | S | M | Message_Type = ISA |
| Event_Time | Intended time of event occurrence | Time(s) | S | M | |
| EO_ID | Economic operator identifier code of the submitting entity | EOID | S | M | |
| F_ID | Facility identifier code | FID | S | M | |

| | | | | | |
|--------------|--|---------|---|---|--|
| Req_Quantity | Requested quantity of aggregated level Uls | Integer | S | M | |
|--------------|--|---------|---|---|--|

3.4.3.3 Response:

| request for reporting the issuance of serial numbers at aggregated level – response | | | | | |
|---|-------------------------------------|--|-------------|----------|--------------------|
| Field | Description | Data Type | Cardinality | Priority | Values |
| BasicInfo_Resp | Block of basic information elements | Component << Basic Information Response >> | S | M | Message_Type = IRA |

3.4.3.4 Request sample

```
{
  "EO_ID": "QCUKR+1AB020054",
  "Event_Time" : "2018-08-23T07:32:20.7878086+00:00",
  "F_ID": "QCUKR<1AB020054000049",
  "Req_Quantity": 2,
  "Message_Type": "IRA",
  "Code": "873345b2-882f-4064-91f0-90669b46c30a",
}
```

3.4.3.5 Successful response sample

HTTP Status 202

```
{
  "Code": "873345b2-882f-4064-91f0-90669b46c30a",
  "Message_Type": "IRA",
  "Error": false,
  "Errors": null,
  "Checksum": "G6HF5H"
}
```

3.4.3.6 Error response sample

Processing errors

| HTTP status | | |
|-------------|----------------------------|--|
| | << Common response code >> | |
| | | |

3.4.4 IRA – Request for reporting the issuance of serial numbers at aggregated level

3.4.4.1 Description

Request for reporting the issuance of serial numbers at aggregated level

3.4.4.2 Description of the fields

| request for reporting the issuance of serial numbers at aggregated level – request | | | | | |
|--|--|---|-------------|----------|--------------------|
| Field | Description | Data Type | Cardinality | Priority | Values |
| BasicInfo_Req | Block of basic information elements | Component << Basic Information Request >> | S | M | Message_Type = IRA |
| Event_Time | Intended time of event occurrence | Time(s) | S | M | |
| EO_ID | Economic operator identifier code of the submitting entity | EOID | S | M | |
| F_ID | Facility identifier code | FID | S | M | |
| Req_Quantity | Requested quantity of aggregated level Uls | Integer | S | M | |
| aUI | List of aggregated level Uls | aUI | M | M | |

3.4.4.3 Response:

| request for reporting the issuance of serial numbers at aggregated level – response | | | | | |
|---|-------------------------------------|--|-------------|----------|--------------------|
| Field | Description | Data Type | Cardinality | Priority | Values |
| BasicInfo_Resp | Block of basic information elements | Component << Basic Information Response >> | S | M | Message_Type = IRA |

3.4.4.4 Request sample

```
{
  "EO_ID": "QCUKR+1AB020054",
  "F_ID": "QCUKR<1AB020054000049",
  "Event_Time": "2018-08-23T07:32:20.7878086+00:00",
  "Req_Quantity": 2,
  "aUI": ["QCBDRa20wBnq5V300003172440841dTQM90",
"QCBDRa20wBnq5V300003172440841dTQM91" ],
  "Message_Type": "IRA",
  "Code": "873345b2-882f-4064-91f0-90669b46c30a",
}
```

3.4.4.5 Successful response sample

HTTP Status 202

```
{
  "Code": "873345b2-882f-4064-91f0-90669b46c30a",
  "Message_Type": "IRA",
  "Error": false,
  "Errors": null,
  "Checksum": "G6HF5H"
}
```

3.4.4.6 Error response sample

Processing errors

| | |
|----------------------------|--|
| HTTP status | |
| << Common response code >> | |
| | |

3.4.5 IDA – (2.3) Request for deactivation of UIs

3.4.5.1 Description

Changes the status of the UIs list in the request to “deactivated”

3.4.5.2 Description of the fields

| request for the deactivation of UIs – request | | | | | |
|---|--|---|-------------|--|---|
| Field | Description | Data Type | Cardinality | Priority | Values |
| BasicInfo_Req | Block of basic information elements | Component << Basic Information Request >> | S | M | Message_Type = IDA |
| Event_Time | Intended time of event occurrence | Time(s) | S | M | |
| EO_ID | Economic operator identifier code of the submitting entity | EOID | S | M | |
| Deact_Type | Deactivation of unit packet or aggregated level UIs | Integer | S | M | 1 – Unit pack level UIs 2 – Aggregated level UIs |
| Deact_Reason1 | Identification of the reason for deactivation | Integer | S | M | See DeactivationReason Type |
| Deact_Reason2 | Description of other reason | Text | S | M, if Deact_Reason1 = 6 (other reason) | |
| Deact_Reason3 | Additional description of the reason | Text | S | O | |
| Deact_upUI | List of unit packet level UIs to be deactivated | upUI(s) | M | M, if Deact_Type = 1 | |
| Deact_aUI | List of aggregated level UIs to be deactivated | aUI | M | M, if Deact_Type = 2 | |

3.4.5.3 Response:

| request for the deactivation of UIs – response | | | | | |
|--|-------------------------------------|--|-------------|----------|--------------------|
| Field | Description | Data Type | Cardinality | Priority | Values |
| BasicInfo_Resp | Block of basic information elements | Component << Basic Information Response >> | S | M | Message_Type = IDA |

3.4.5.4 Request sample

{

```
"EO_ID": "QCUKR+1AB020054",
"Event_Time" : "2018-08-23T07:32:20.7878086+00:00",
"Deact_Type": 1,
"Deact_Reason1": 1,
"Deact_Reason2": "reason one",
"Deact_Reason3": "reason two",
"Deact_upUI": [ "752a77aed2a34c47bc926a40bd2e6ef3" ],
"Deact_apUI": [ "752a77aed2a34c47bc926a40bd2e6ef3" ],
"Message_Type": "IDA",
"Code": "873345b2-882f-4064-91f0-90669b46c30a",
}
```

3.4.5.5 Successful response sample

HTTP Status 202

```
{
  "Code": "873345b2-882f-4064-91f0-90669b46c30a",
  "Message_Type": "IDA",
  "Error": false,
  "Errors": null,
  "Checksum": "G6HF5H"
}
```

3.4.5.6 Error response sample

Processing errors

| HTTP status | | |
|----------------------------|--|--|
| << Common response code >> | | |
| | | |

3.4.6 EUA – (3.1) Application of unit level UIs on unit packets

3.4.6.1 Description

Event notification when the code is applied / printed on unit packets.

3.4.6.2 Description of the fields

| upUI application event | | | | | |
|------------------------|--|---|-------------|----------|--------------------|
| Field | Description | Data Type | Cardinality | Priority | Values |
| BasicInfo_Req | Block of basic information elements | Component << Basic Information Request >> | S | M | Message_Type = EUA |
| Event_Time | Intended time of event occurrence | Time(s) | S | M | |
| EO_ID | Economic operator identifier code of the submitting entity | EOID | S | M | |
| F_ID | Facility identifier code | FID | S | M | |
| upUI_1 | List of unit packet level UIs to be recorded (full length) | upUI(L) | M | M | |
| upUI_2 | List of corresponding unit packet level UIs to be recorded (as visible in human readable format) indicated in the same order as upUI_1 | upUI(s) | M | M | |
| upUI_comment | Comments by the reporting entity | Text | S | O | |

3.4.6.3 Response:

| upUI application event – response | | | | | |
|-----------------------------------|-------------------------------------|--|-------------|----------|--------------------|
| Field | Description | Data Type | Cardinality | Priority | Values |
| BasicInfo_Resp | Block of basic information elements | Component << Basic Information Response >> | S | M | Message_Type = EUA |

3.4.6.4 Request sample

```
{
  "EO_ID": "QCUKR+1AB020054",
  "F_ID": "QCUKR<1AB020054000049",
  "Event_Time": "2018-08-23T07:32:20.7878086+00:00",
  "upUI_1": [
    "5cd2729e-6acc-4479-b67e-a26a84a6e88b19071619",
    "752a77aed2a34c47bc926a40bd2e6ef319071619"
  ],
  "upUI_2": [
    "5cd2729e-6acc-4479-b67e-a26a84a6e88b",
    "752a77aed2a34c47bc926a40bd2e6ef3"
  ],
  "upUI_comment": "Comments",
  "Message_Type": "EUA",
  "Code": "873345b2-882f-4064-91f0-90669b46c30a",
}
```

3.4.6.5 Successful response sample

HTTP Status 202

```
{
  "Code": "873345b2-882f-4064-91f0-90669b46c30a",
  "Message_Type": "EUA",
  "Error": false,
  "Errors": null,
  "Checksum": "G6HF5H"
}
```

3.4.6.6 Error response sample

Processing errors

| HTTP status | | |
|-------------|----------------------------|--|
| | << Common response code >> | |
| | | |

3.4.7 EPA – (3.2) Application of aggregated level UIs on aggregated packaging

3.4.7.1 Description

Event notification when the code is applied / printed on an aggregation container. This also records the items that are aggregated into this container.

3.4.7.2 Description of the fields

| Application of aggregated level UIs on aggregated packaging - request | | | | | |
|---|---|---|-------------|---------------------------------|---|
| Field | Description | Data Type | Cardinality | Priority | Values |
| BasicInfo_Req | Block of basic information elements | Component << Basic Information Request >> | S | M | Message_Type = EPA |
| EO_ID | Economic operator identifier code of the submitting entity | EOID | S | M | |
| F_ID | Facility identifier code | FID | S | M | |
| Event_Time | Time of event occurrence | Time(s) | S | M | |
| aUI | Aggregated level UI | aUI | S | M | |
| Aggregation_Type | Identification of aggregation type | Integer | S | M | 1 – aggregation of only unit packet level UIs 2 – aggregation of only aggregated level UIs 3 – aggregation of both unit packet and aggregated level UIs |
| Aggregated_UIs 1 | List of unit packet level UIs subject to aggregation | upUI(L) | M | M, if Aggregation_Type = 1 or 3 | |
| Aggregated_UIs 2 | List of aggregated level UIs subject to further aggregation | aUI | M | M, if Aggregation_Type = 2 or 3 | |
| aUI_comment | Comments by the reporting entity | Text | S | O | |

3.4.7.3 Response:

| Application of aggregated level UIs on aggregated packaging – response | | | | | |
|--|-------------------------------------|--|-------------|----------|--------------------|
| Field | Description | Data Type | Cardinality | Priority | Values |
| BasicInfo_Resp | Block of basic information elements | Component << Basic Information Response >> | S | M | Message_Type = EPA |

3.4.7.4 Request sample

```
{
  "EO_ID": "QCUKR+1AB020054",
  "F_ID": "QCUKR<1AB020054000049",
  "Event_Time": "2018-08-23T07:32:20.7878086+00:00",
  "Aggregation_Type": "1",
  "aUI" : "QCBDRa20wBnq5V300003172440841dTQM90",
  "Aggregated_UIs1": ["DCBDRa20wBnq5V300003172440841dTQM9019071619",
"ACBDRa20wBnq5V300003172440841dTQM9019071619",
"BCBDRa20wBnq5V300003172440841dTQM9019071619",
"CCBDRa20wBnq5V300003172440841dTQM9019071619"],
  "Aggregated_UIs2": ["QCBDRa20wBnq5V300003172440841dTQM90",
"QCBDRa20wBnq5V300003172440841dTQM90", "QCBDRa20wBnq5V300003172440841dTQM90",
"QCBDRa20wBnq5V300003172440841dTQM90" ],
  "upUI_comment": "Comments",
  "Message_Type": "EPA",
  "Code": "873345b2-882f-4064-91f0-90669b46c30a",
}
```

3.4.7.5 Successful response sample

HTTP Status 202

```
{
  "Code": "873345b2-882f-4064-91f0-90669b46c30a",
  "Message_Type": "EPA",
  "Error": false,
  "Errors": null,
  "Checksum": "G6HF5H"
}
```

3.4.7.6 Error response sample

Processing errors

| HTTP status | |
|-------------|----------------------------|
| | << Common response code >> |
| | |

3.4.8 EDP – (3.3) Dispatch of tobacco products from a facility

3.4.8.1 Description

Record that the UIs listed in the call have been dispatched from the economic identifier.

3.4.8.2 Description of the fields

| Dispatch of tobacco products from a facility event | | | | | |
|--|---|--|-------------|---------------------------|---|
| Field | Description | Data Type | Cardinality | Priority | Values |
| BasicInfo_Req | Block of basic information elements | Component << Basic Information Request >> | S | M | Message_Type = EDP |
| EO_ID | Economic operator identifier code of the submitting entity | E OID | S | M | |
| Event_Time | Time of event occurrence | Time (s) | S | M | |
| F_ID | Dispatch facility identifier code | FID | S | M | |
| Destination_ID1 | Indication if the destination facility is located on the EU territory and if it is a vending machine (VM) | Integer | S | M | 1 – Non EU dest. 2 – EU destination other than VM – fixed quantity delivery 3 – EU VM(s) 4 – EU destination other than VM – delivery with VV |
| Destination_ID2 | Destination facility identifier code | FID | S | M, if Destination_ID1 = 2 | |
| Destination_ID3 | Destination facility identifier code(s) – possible multiple vending machines | FID | M | M, if Destination_ID1 = 3 | |
| Destination_ID4 | Destination id facility codes | FID | M | M, if Destination_ID1 = 4 | |
| Destination_ID5 | Destination facility's full address: street, house number, postal code, city | Text | S | M, if Destination_ID1 = 1 | |
| Transport_mode | Mode of transport by which the product leaves the facility, see: Commission Regulation (EC) No 684/2009, Annex II, Code List 7 | Integer | S | M | See TransportMode in section Error! Reference source not found. |
| Transport_vehicle | Identification of the mode of transport (i.e. number plates, train number, plane/flight number, ship name or other identification) | Text | S | M | 'n/a' is permitted value if Transport_mode = 0 and product movement takes place between adjacent facilities and is delivered manually |
| Transport_cont1 | Indication if the transport is containerised and uses an individual transport unit code (e.g. SSCC) | Boolean | S | M | 0 – No 1 – Yes |
| Transport_cont2 | Individual transport unit code of the container | ITU | S | M, if Transport_cont1 = 1 | |
| Transport_s1 | Indication if the dispatch takes place with the logistic/postal operator who operates its own track and trace system accepted by the Member State of the dispatch facility. Only for small quantities of tobacco products (net weight of the products dispatched below 10 kg) | Boolean | S | M | 0 – No 1 – Yes |

| Dispatch of tobacco products from a facility event | | | | | |
|--|---|-----------|-------------|---------------------------|--|
| Field | Description | Data Type | Cardinality | Priority | Values |
| | destined for exports to third countries | | | | |
| Transport_s2 | The logistic operator's tracking number | Text | S | M, if Transport_s1 = 1 | |
| EMCS | Dispatch under the Excise Movement and Control System (EMCS) | Boolean | S | M | 0 – No 1 – Yes |
| EMCS_ARC | Administrative Reference Code (ARC) | ARC | S | M, if EMCS = 1 | |
| SAAD | Dispatch with a simplified accompanying document, see: Commission Regulation (EEC) No 3649/92 | Boolean | S | M | 0 – No 1 – Yes |
| SAAD_number | Reference number of the declaration and/or authorization which has to be given by the competent authority in the Member State of destination before the movement starts | Text | S | M, if SAAD = 1 | |
| Exp_Declaration | Indication if the Movement Reference Number (MRN) has been issued by the customs office | Boolean | S | M | 0 – No 1 – Yes |
| Exp_DeclarationNumber | Movement Reference Number (MRN) | MRN | S | M, if Exp_Declaration = 1 | |
| UI_Type | Identification of UI types in the dispatch (recorded at the highest level of available aggregation) | Integer | S | M | 1 – only unit packet level UIs 2 – only aggregated level UIs 3 – both unit packet and aggregated level UIs |
| upUIs | List of unit packet level UIs subject to the dispatch | upUI(L) | M | M, if UI_Type = 1 or 3 | |
| aUIs | List of aggregated level UIs subject to the dispatch | aUI | M | M, if UI_Type = 2 or 3 | |
| Dispatch_comment | Comments by the reporting entity | Text | S | O | |

3.4.8.3 Response:

Response:

| Dispatch event – response | | | | | |
|---------------------------|-------------------------------------|--|-------------|----------|--------------------|
| Field | Description | Data Type | Cardinality | Priority | Values |
| BasicInfo_Resp | Block of basic information elements | Component << Basic Information Response >> | S | M | Message_Type = EDP |

3.4.8.4 Request sample

```
{
  "EO_ID": "QCUKR+1AB020054",
  "F_ID": "QCUKR<1AB020054000049",
  "Event_Time": "2018-08-23T07:32:20.7878086+00:00",
  "Destination_ID1": "1",
  "Destination_ID2": "FacilityIdB",
  "Destination_ID3": [ " FacilityIdB ", " FacilityIdB " ],
  "Destination_ID4": [ " FacilityIdB" ],
  "Destination_ID5": "FacilityIdA",
  "Transport_vehicle": "1",
  "Transport_cont1": true,
  "Transport_cont2": "1",
  "Transport_s1": true,
  "Transport_s2": "1",
  "EMCS": false,
  "EMCS_ARC": null,
  "SAAD": true,
  "SAAD_number": 1,
  "Exp_Declaration": true,
  "Exp_DeclarationNumber": true,
  "UI_Type": 1,
  "upUIs": [ "5cd2729e6acc4479-b67e-a26a84a6e88b19071619",
"752a77aed2a34c47bc926a40bd2e6ef319071619" ],
  "aUIs": [ "5cd2729e6acc4479b67ea26a84a6e88b",
"752a77aed2a34c47bc926a40bd2e6ef3" ],
  "Dispatch_comment": "Comments",
  "Message_Type": "EDP",
  "Code": "873345b2-882f-4064-91f0-90669b46c30a",
}
```

3.4.8.5 Successful response sample

HTTP Status 202

```
{
  "Code": "873345b2-882f-4064-91f0-90669b46c30a",
  "Message_Type": "EDP",
  "Error": false,
  "Errors": null,
  "Checksum": "G6HF5H"
}
```

3.4.8.6 Error response sample

Processing errors

| HTTP status | | |
|-------------|----------------------------|--|
| | << Common response code >> | |
| | | |

3.4.9 ERP – (3.4) Arrival of tobacco products at a facility

3.4.9.1 Description

Record that the UIs listed in the call have been received to an economic identifier.

3.4.9.2 Description of the fields

| Arrival of tobacco products at a facility | | | | | |
|---|--|---|-------------|------------------------|--|
| Field | Description | Data Type | Cardinality | Priority | Values |
| BasicInfo_Req | Block of basic information elements | Component << Basic Information Request >> | S | M | Message_Type = ERP |
| EO_ID | Economic operator identifier code of the submitting entity | EOID | S | M | |
| F_ID | Arrival facility identifier code | FID | S | M | |
| Event_Time | Time of event occurrence | Times(s) | S | M | |
| Product_Return | Indication if the arriving products are a return following complete or partial non-delivery | Boolean | S | M | 0 – No 1 – Yes |
| UI_Type | Identification of UI types received (recorded at the highest level of available aggregation) | Integer | S | M | 1 – only unit packet level UIs 2 – only aggregated level UIs 3 – both unit packet and aggregated level UIs |
| upUIs | List of unit packet level UIs received | upUI(L) | M | M, if UI_Type = 1 or 3 | |
| aUIs | List of aggregated level UIs received | aUI | M | M, if UI_Type = 2 or 3 | |
| Arrival_comment | Comments by the reporting entity | Text | S | O | |

3.4.9.3 Response:

| Arrival of tobacco products at a facility– response | | | | | |
|---|-------------------------------------|--|-------------|----------|--------------------|
| Field | Description | Data Type | Cardinality | Priority | Values |
| BasicInfo_Resp | Block of basic information elements | Component << Basic Information Response >> | S | M | Message_Type = ERP |

3.4.9.4 Request sample

```
{
  "EO_ID": "QCUKR+1AB020054",
  "F_ID": "QCUKR<1AB020054000049",
  "Event_Time": "2018-08-23T07:32:20.7878086+00:00",
  "Product_Return": "true",
  "UI_Type": "1",
  "upUIs": [ "752a77aed2a34c47bc926a40bd2e6ef319071619",
"5cd2729e6acc4479b67ea26a84a6e88b19071619" ],
  "aUIs": [ "752a77aed2a34c47bc926a40bd2e6ef3", "5cd2729e6acc4479-
b67ea26a84a6e88b" ],
  "Arrival_comment": "Comments",
  "Message_Type": "ERP",
  "Code": "873345b2-882f-4064-91f0-90669b46c30a",
}
```

3.4.9.5 Successful response sample

HTTP Status 202

```
{
  "Code": "873345b2-882f-4064-91f0-90669b46c30a",
  "Message_Type": "ERP",
  "Error": false,
  "Errors": null,
  "Checksum": "G6HF5H"
}
```

3.4.9.6 Error response sample

Processing errors

| HTTP status |
|----------------------------|
| << Common response code >> |
| |

3.4.10 ETL – (3.5) Trans-loading

3.4.10.1 Description

Event to show that UIs have been moved from one transport mechanism to another.

3.4.10.2 Description of the fields

| Trans-loading event | | | | | |
|---------------------|--|---|-------------|---------------------------|--------------------|
| Field | Description | Data Type | Cardinality | Priority | Values |
| BasicInfo_Req | Block of basic information elements | Component << Basic Information Request >> | S | M | Message_Type = ETL |
| EO_ID | Economic operator identifier code of the submitting entity | EOID | S | M | |
| Event_Time | Intended time of event occurrence | Time(s) | S | M | |
| Destination_ID1 | Indication if the destination facility is located on the EU territory | Integer | S | M | 0 – No 1 – Yes |
| Destination_ID2 | Destination facility identifier code | FID | S | M, if Destination_ID1 = 1 | |
| Destination_ID3 | Destination facility's full address | Text | S | M, if Destination_ID1 = 0 | |
| Transport_mode | Mode of transport to which the product is trans-loaded, see: Commission Regulation (EC) No 684/2009, Annex II, Code List 7 | Integer | S | M | See TransportMode |
| Transport_vehicle | Identification of the vehicle (i.e. number plates, train number, plane/flight number, ship name or other identification) | Text | S | M | |
| Transport_cont1 | Indication if the transport is containerised and uses an individual transport unit code (e.g. SSCC) | Boolean | S | M | 0 – No 1 – Yes |

| Trans-loading event | | | | | |
|--------------------------|--|-----------|-------------|------------------------------|--|
| Field | Description | Data Type | Cardinality | Priority | Values |
| Transport_cont 2 | Individual transport unit code of the container | ITU | S | M | |
| EMCS | Dispatch under the Excise Movement and Control System (EMCS) | Boolean | S | M | 0 – No 1 – Yes |
| EMCS_ARC | Administrative Reference Code (ARC) | ARC | S | M, if EMCS = 1 | |
| UI_Type | Identification of UI types subject to the trans-loading (recorded at the highest level of available aggregation) | Integer | S | M | 1 – only unit packet level UIs 2 – only aggregated level UIs 3 – both unit packet and aggregated level UIs |
| upUIs | List of unit packet level UIs subject to the trans-loading | upUI(L) | M | M, if UI_Type = 1 or 3 | |
| aUIs | List of aggregated level UIs subject to the trans-loading | aUI | M | M, if UI_Type = 2 or 3 | |
| Transloading_c omment | Comments by the reporting entity | Text | S | O | |

3.4.10.3 Response:

| Trans-loading event – response | | | | | |
|--------------------------------|-------------------------------------|--|-------------|----------|--------------------|
| Field | Description | Data Type | Cardinality | Priority | Values |
| BasicInfo_Resp | Block of basic information elements | Component << Basic Information Response >> | S | M | Message_Type = ETL |

3.4.10.4 Request sample

```
{
  "EO_ID": "QCUKR+1AB020054",
  "Event_Time": "2018-08-23T07:32:20.7878086+00:00",
  "Destination_ID1": 1,
  "Destination_ID2": "FGHZ7G",
  "Destination_ID3": "",
  "Transport_mode": 1,
  "Transport_vehicle": 1,
  "Transport_cont1": 1,
  "Transport_cont2": "code",
  "EMCS": 1,
  "EMCS_ARC": "ref",
  "UI_Type": 1,
  "upUIs": [ "5cd2729e6acc4479-b67e-a26a84a6e88b19071619",
"652a77aed2a34c47bc926a40bd2e6ef319071619" ],
  "aUIs": [ "5cd2729e6acc4479b67ea26a84a6e88c",
"752a77aed2a34c47bc926a40bd2e6efh" ],
  "Transloading_comment": "Comments",
  "Message_Type": "ETL",
  "Code": "873345b2-882f-4064-91f0-90669b46c30a",
}
```

3.4.10.5 Successful response sample

HTTP Status 202

```
{
  "Code": "873345b2-882f-4064-91f0-90669b46c30a",
  "Message_Type": "ETL",
  "Error": false,
  "Errors": null,
  "Checksum": "G6HF5H"
}
```

3.4.10.6 Error response sample

Processing errors

| HTTP status | | |
|----------------------------|-------------------|--|
| << Common response code >> | | |
| 400 | VALIDATION_FAILED | This error is returned when at least one of the mandatory fields are missing or another type of validation failed. |

3.4.11 EUD – (3.6) Disaggregation of aggregated level UIs

3.4.11.1 Description

Event showing that an aggregation no longer exists.

3.4.11.2 Description of the fields

| aUI disaggregation event | | | | | |
|--------------------------|---|--|-------------|----------|--------------------|
| Field | Description | Data Type | Cardinality | Priority | Values |
| BasicInfo_Req | Block of basic information elements | Component << Basic Information Request >> | S | M | Message_Type = EUD |
| EO_ID | Economic operator's identifier | EOID | S | M | |
| F_ID | Facility's identifier | FID | S | M | |
| Event_Time | Time of event occurrence | Time(s) | S | M | |
| aUI | Aggregated level UI subject to disaggregation | aUI | S | M | |
| disaUI_comment | Comments by the reporting entity | Text | S | O | |

3.4.11.3 Response:

| aUI disaggregation event- response | | | | | |
|------------------------------------|-------------|-----------|-------------|----------|--------|
| Field | Description | Data Type | Cardinality | Priority | Values |

| | | | | | |
|----------------|-------------------------------------|---|---|---|--------------------|
| BasicInfo_Resp | Block of basic information elements | Component << Basic Information Response >> | S | M | Message_Type = EUD |
|----------------|-------------------------------------|---|---|---|--------------------|

3.4.11.4 Request sample

```
{
  "EO_ID": "QCUKR+1AB020054",
  "F_ID": "QCUKR<1AB020054000049",
  "Event_Time": "2018-08-23T07:32:20.7878086+00:00",
  "aUI": "QCBDRa20wBnq5V300003172440841dTQM90",
  "disaUI_comment": "Comments",
  "Message_Type": "EUD",
  "Code": "873345b2-882f-4064-91f0-90669b46c30a",
}
```

3.4.11.5 Successful response sample

HTTP Status 202

```
{
  "Code": "873345b2-882f-4064-91f0-90669b46c30a",
  "Message_Type": "EUD",
  "Error": false,
  "Errors": null,
  "Checksum": "G6HF5H"
}
```

3.4.11.6 Error response sample

Processing errors

| HTTP status | | |
|-------------|----------------------------|--|
| | << Common response code >> | |
| | | |

3.4.12 EVR – (3.7) Report the delivery carried out with a vending van to retail outlet

3.4.12.1 Description

Event sent when UIs have been distributed via a van delivery.

3.4.12.2 Description of the fields

| Vending Van event | | | | | |
|-------------------|---|---|-------------|------------------------|--|
| Field | Description | Data Type | Cardinality | Priority | Values |
| BasicInfo_Req | Block of basic information elements | Component << Basic Information Request >> | S | M | Message_Type = EVR |
| EO_ID | Economic operator identifier code of the submitting entity | EOID | S | M | |
| F_ID | Facility identifier code of retail outlet | FID | S | M | |
| Event_Time | Time of event occurrence | Time(s) | S | M | |
| UI_Type | Identification of UI types delivered (recorded at the highest level of available aggregation) | Integer | S | M | 1 – only unit packet level UIs 2 – only aggregated level UIs 3 – both unit packet and aggregated level UIs |
| upUIs | List of unit packet level UIs delivered | upUI(L) | M | M, if UI_Type = 1 or 3 | |
| aUIs | List of aggregated level UIs delivered | aUI | M | M, if UI_Type = 2 or 3 | |
| Delivery_comment | Comments by the reporting entity | Text | S | O | |

3.4.12.3 Response:

| Vending Van event – response | | | | | |
|------------------------------|-------------------------------------|--|-------------|----------|--------------------|
| Field | Description | Data Type | Cardinality | Priority | Values |
| BasicInfo_Resp | Block of basic information elements | Component << Basic Information Response >> | S | M | Message_Type = EVR |

3.4.12.4 Request sample

```
{
  "EO_ID": "QCUKR+1AB020054",
  "F_ID": "QCUKR<1AB020054000049",
  "Event_Time": "2018-08-23T07:32:20.7878086+00:00",
  "UI_Type": 1,
  "upUIs": [ "752a77aed2a34c47bc926a40bd2e6ef419071619",
"5cd2729e6acc4479b67ea26a84a6e88c19071619" ],
  "aUIs": [ "752a77aed2a34c47bc926a40bd2e6ef3", "8cd2729e-6acc-4479-b67e-
a26a84a6e88b" ],
  "Delivery_comment": "Comments",
  "Message_Type": 7,
  "Code": "873345b2-882f-4064-91f0-90669b46c30a",
}
```

3.4.12.5 Successful response sample

HTTP Status 202

```
{
  "Code": "873345b2-882f-4064-91f0-90669b46c30a",
  "Message_Type": "EVR",
  "Error": false,
  "Errors": null,
  "Checksum": "G6HF5H"
}
```

3.4.12.6 Error response sample

Processing errors

| HTTP status | | |
|----------------------------|--|--|
| << Common response code >> | | |
| | | |

3.5 Transactional events

3.5.1 EIV – (4.1) Issuing of the invoice

3.5.1.1 Description.

Added invoice details to a UI.

3.5.1.2 Description of the fields

| Invoice reporting | | | | | |
|-------------------|--|--|-------------|---------------------------|--------------------|
| Field | Description | Data Type | Cardinality | Priority | Values |
| BasicInfo_Req | Block of basic information elements | Component << Basic Information Request >> | S | M | Message_Type = EIV |
| EO_ID | Economic operator identifier code of the submitting entity | EOID | S | M | |
| Event_Time | Time of event occurrence | Time(s) | S | M | |
| Invoice_Type1 | Type of the invoice | Integer | S | M | See InvoiceType |
| Invoice_Type2 | Description of the other type of the invoice | Text | S | M, if Invoice_Type1 = 3 | |
| Invoice_Number | Number of the invoice | Text | S | M | |
| Invoice_Date | Date of the invoice | Date | S | M | |
| Invoice_Seller | Identity of the seller | EOID | S | M | |
| Invoice_Buyer1 | Identification if the buyer is located in the EU | Boolean | S | M | 0 – No 1 – Yes |
| Invoice_Buyer2 | Identity of the buyer | EOID | S | M, if Invoice_Buyer1 = 1 | |
| Buyer_Name | Buyer's registered legal name | Text | S | M, if Invoice_Buyer1 = 0 | |
| Buyer_Address | Buyer's address – street name, house number, postal code, city | Text | S | M, if Invoice_Buyer1 = 0 | |
| Buyer_CountryReg | Buyer's country of registration | Country | S | M, if Invoice_Buyer1 = 0 | |
| Buyer_TAX_N | Buyer's tax registration number | Text | S | M, if Invoice_Buyer1 = 0 | |
| First_Seller_EU | Identification if the invoice is issued by the first seller in the EU, i.e. the EU manufacturer or the importer, and the product is destined for the EU market | Boolean | S | M | 0 – No 1 – Yes |
| Product_Items_1 | List of TPIDs corresponding to the product items listed on the invoice | TPID | M | M, if First_Seller_EU = 1 | |
| Product_Items_2 | List of product numbers corresponding to the product items listed on the invoice (in the same order as product_Items_1) | PN | M | M, if First_Seller_EU = 1 | |
| Product_Price | Net unit packet price per each pair of TPID and product number (in the same order as product_Items_1) | Decimal | M | M, if First_Seller_EU = 1 | |
| Invoice_Net | Total net amount of the invoice | Decimal | S | M | |
| Invoice_Currency | Currency of the invoice | Currency | S | M | |

| Invoice reporting | | | | | |
|-------------------|--|-----------|-------------|------------------------|--|
| Field | Description | Data Type | Cardinality | Priority | Values |
| UI_Type | Identification of UI types covered by the invoice (recorded at the highest level of available aggregation) | Integer | S | M | 1 – only unit packet level Uls 2 – only aggregated level Uls 3 – both unit packet and aggregated level Uls |
| upUls | List of unit packet level Uls covered by the invoice | upUI(L) | M | M, if UI_Type = 1 or 3 | |
| aUls | List of aggregated level Uls covered by the invoice | aUI | M | M, if UI_Type = 2 or 3 | |
| Invoice_comment | Comments by the reporting entity | Text | S | O | |

3.5.1.3 Response:

| Invoice reporting– response | | | | | |
|-----------------------------|-------------------------------------|--|-------------|----------|--------------------|
| Field | Description | Data Type | Cardinality | Priority | Values |
| BasicInfo_Resp | Block of basic information elements | Component << Basic Information Response >> | S | M | Message_Type = EIV |

3.5.1.4 Request sample

```
{
  "EO_ID": "QCUKR+1AB020054",
  "Event_Time": "2018-08-23T07:32:20.7878086+00:00",
  "Invoice_Type1": 1,
  "Invoice_Type2": "other type",
  "Invoice_Number": "INV000001",
  "Invoice_Date": "2018-08-23T07:32:20.7878086+00:00",
  "Invoice_Seller": "SellerId",
  "Invoice_Buyer1": false,
  "Invoice_Buyer2": null,
  "Buyer_Name": "Buyer1",
  "Buyer_Address": "BuyerAddress",
  "Buyer_CountryReg": "LU",
  "Buyer_TAX_N": "TAX0001",
  "First_Seller_EU": 1,
  "Product_Items_1": [ "IRU_GOOD" ],
  "Product_Items_2": [ "IRU_GOOD" ],
  "Product_Price": [ "16.99", "19.99" ],
  "Invoice_Net": 10099.99,
  "Invoice_Currency": "EUR",
  "UI_Type": 1,
  "upUls": [ "5cd2729e6acc4479b67ea26a84a6e88b19071619",
    "752a77aed2a34c47bc926a40bd2e6ef319071619" ],
  "aUls": [ "5cd2729e-6acc-4479-b67e-a26a84a6e88b",
    "752a77aed2a34c47bc926a40bd2e6ef3" ],
  "Invoice_comment": "Comments",
  "Message_Type": "EIV",
  "Code": "873345b2-882f-4064-91f0-90669b46c30a",
}
```

3.5.1.5 Successful response sample

HTTP Status 202

```
{
  "Code": "873345b2-882f-4064-91f0-90669b46c30a",
  "Message_Type": "EIV",
  "Error": false,
  "Errors": null,
  "Checksum": "G6HF5H"
}
```

3.5.1.6 Error response sample

Processing errors

| HTTP status | | |
|----------------------------|--|--|
| << Common response code >> | | |
| | | |

3.5.2 EPO – (4.2) Issuing of the order number

3.5.2.1 Description

Adds a purchase order event to a UI.

3.5.2.2 Description of the fields

| Purchase order event | | | | | |
|----------------------|---|---|-------------|------------------------|--|
| Field | Description | Data Type | Cardinality | Priority | Values |
| BasicInfo_Req | Block of basic information elements | Component << Basic Information Request >> | S | M | Message_Type = EPO |
| EO_ID | Economic operator identifier code of the submitting entity | EOID | S | M | |
| Event_Time | Time of event occurrence | Time(s) | S | M | |
| Order_Number | Number of the purchase order | Text | S | M | |
| Order_Date | Date of the purchase order | Date | S | M | |
| UI_Type | Identification of UI types covered by the purchase order (recorded at the highest level of available aggregation) | Integer | S | M | 1 – only unit packet level UIs 2 – only aggregated level UIs 3 – both unit packet and aggregated level UIs |
| upUIs | List of unit packet level UIs covered by the purchase order | upUI(L) | M | M, if UI_Type = 1 or 3 | |
| aUIs | List of aggregated level UIs covered by the purchase order | aUI | M | M, if UI_Type = 2 or 3 | |
| Order_comment | Description of the reason for delayed recording of the purchase order | Text | S | O | |

3.5.2.3 Response:

| Purchase order – response | | | | | |
|---------------------------|-------------------------------------|--|-------------|----------|--------------------|
| Field | Description | Data Type | Cardinality | Priority | Values |
| BasicInfo_Resp | Block of basic information elements | Component << Basic Information Response >> | S | M | Message_Type = EPO |

3.5.2.4 Request sample

```
{
  "EO_ID": "QCUKR+1AB020054",
  "Event_Time": "2018-08-23T07:32:20.7878086+00:00",
  "Order_Number": "1234",
  "Order_Date": "2018-08-23T07:32:20.7878086+00:00",
  "UI_Type": 1,
  "upUIs": [ "5cd2729e-6acc-4479-b67e-a26a84a6e88b19071619",
"752a77aed2a34c47bc926a40bd2e6ef319071619" ],
  "aUIs": [ "5cd2729e-6acc-4479-b67e-a26a84a6e88b",
"752a77aed2a34c47bc926a40bd2e6ef3" ],
  "Order_comment": "Comments",
  "Message_Type": "EPO",
  "Code": "873345b2-882f-4064-91f0-90669b46c30a",
}
```

3.5.2.5 Successful response sample

HTTP Status 202

```
{
  "Code": "873345b2-882f-4064-91f0-90669b46c30a",
  "Message_Type": "EPO",
  "Error": false,
  "Errors": null,
  "Checksum": "G6HF5H"
}
```

3.5.2.6 Error response sample

Processing errors

| HTTP status | | |
|-------------|----------------------------|--|
| | << Common response code >> | |
| | | |

3.5.3 EPR – (4.3) Receipt of the payment

3.5.3.1 Description

Adds a payment record event to a UI.

3.5.3.2 Description of the fields

| Payment record event | | | | | |
|----------------------|--|---|-------------|---|--|
| Field | Description | Data Type | Cardinality | Priority | Values |
| BasicInfo_Req | Block of basic information elements | Component << Basic Information Request >> | S | M | Message_Type = EPR |
| EO_ID | Economic operator identifier code of the submitting entity | E OID | S | M | |
| Event_Time | Time of event occurrence | Time(s) | S | M | |
| Payment_Date | Date of the payment receipt | Date | S | M | |
| Payment_Type | Type of payment | Integer | S | M | See PaymentType |
| Payment_Amount | Amount of the payment | Decimal | S | M | |
| Payment_Currency | Currency of the payment | Currency | S | M | |
| Payment_Payer1 | Identification if the payer is located in the EU | Boolean | S | M | 0 – No 1 – Yes |
| Payment_Payer2 | Identity of the payer | E OID | S | M, if Payment_Payer1 = 1 | |
| Payer_Name | Payer's registered legal name | Text | S | M, if Payment_Payer1 = 0 | |
| Payer_Address | Payer's address – street name, house number, postal code and city | Text | S | M, if Payment_Payer1 = 0 | |
| Payer_CountryReg | Payer's country of registration | Country | S | M, if Payment_Payer1 = 0 | |
| Payer_TAX_N | Payer's tax registration number | Text | S | M, if Payment_Payer1 = 0 | |
| Payment_Recipient | Identity of the recipient | E IOD | S | M | |
| Payment_Invoice | Indication if the payment corresponds to the existing invoice | Boolean | S | M | 0 – No 1 – Yes |
| Invoice_Paid | Number of the invoice paid with the payment | Text | S | M, if Payment_Invoice = 1 | |
| UI_Type | Identification of UI types covered by the payment (recorded at the highest level of available aggregation) | Integer | S | M, if Payment_Invoice = 0 | 1 – only unit packet level UIs 2 – only aggregated level UIs 3 – both unit packet and aggregated level UIs |
| upUIs | List of unit packet level UIs covered by the payment | upUI(L) | M | M, if AND Payment_Invoice = 0 UI_Type = 1 or 3 | |
| aUIs | List of aggregated level UIs covered by the payment | aUI | M | M, if AND Payment_Invoice = 0 UI_Type = 2 or 3 | |
| Payment_comment | Comments by the reporting entity | Text | S | O | |

3.5.3.3 Response:

| Payment record – response | | | | | |
|---------------------------|-------------------------------------|--|-------------|----------|--------------------|
| Field | Description | Data Type | Cardinality | Priority | Values |
| BasicInfo_Resp | Block of basic information elements | Component << Basic Information Response >> | S | M | Message_Type = EPR |

3.5.3.4 Request sample

```
{
  "EO_ID": "QCUKR+1AB020054",
  "Event_Time": "2018-08-23T07:32:20.7878086+00:00",
  "Payment_Date": "2018-08-23T07:32:20.7878086+00:00",
  "Payment_Type": 1,
  "InvoiceType": 1,
  "UI_Type": 1,
  "Payment_Amount": 1.99,
  "Payment_Currency": "EUR",
  "Payment_Payer1": true,
  "Payment_Payer2": "PayerId",
  "Payer_Name": "PayerNmae",
  "Payer_Address": "Address",
  "Payer_CountryReg": "UK",
  "Payer_TAX_N": "TaxId",
  "Payment_Recipient": "PaymentRecipient",
  "Payment_Invoice": 1,
  "Invoice_Paid": "test" ,
  "upUIs": [ "5cd2729e-6acc-4479-b67e-a26a84a6e88b19071619",
"752a77aed2a34c47bc926a40bd2e6ef319071619" ],
  "aUIs": [ "5cd2729e-6acc-4479-b67e-a26a84a6e88b",
"752a77aed2a34c47bc926a40bd2e6ef3" ],
  "Payment_comment": "Comments",
  "Message_Type": "EPR",
  "Code": "873345b2-882f-4064-91f0-90669b46c30a",
}
```

3.5.3.5 Successful response sample

HTTP Status 202

```
{
  "Code": "873345b2-882f-4064-91f0-90669b46c30a",
  "Message_Type": "EPR",
  "Error": false,
  "Errors": null,
  "Checksum": "G6HF5H"
}
```

3.5.3.6 Error response sample

Processing errors

| HTTP status | | |
|----------------------------|--|--|
| << Common response code >> | | |
| | | |

3.6 Recall

3.6.1 RCL – (5.0) Recalls of requests, operational and transactional messages

3.6.1.1 Description

Given a recall id (“Code” in the return of any message) The caller can mark that event invalid. This is possible for message types 2-1, 2-2, 3-1 to 3-7, 4-1, 4-2 and 4-3)

3.6.1.2 Description of the fields

| Recall – request | | | | | |
|------------------|--|---|-------------|---|----------------------|
| Field | Description | Data Type | Cardinality | Priority | Values |
| BasicInfo_Req | Block of basic information elements | Component << Basic Information Request >> | S | M | Message_Type = RCL |
| EO_ID | Economic operator identifier code of the submitting entity | EOID | S | M | |
| Recall_CODE | Message recall code provided to the message sender in the acknowledgement of the original message to be recalled | Text | S | M | |
| Recall_Reason1 | Reason for recalling the original message | Integer | S | M | See RecallReasonType |
| Recall_Reason2 | Description of the reason for recalling the original message | Text | S | M, if Recall_Reason1 = 3 (other reason) | |
| Recall_Reason3 | Any additional explanations on the reason for recalling the original message | Text | S | O | |

3.6.1.3 Response:

| Recall – response | | | | | |
|-------------------|-------------------------------------|--|-------------|----------|--------------------|
| Field | Description | Data Type | Cardinality | Priority | Values |
| BasicInfo_Resp | Block of basic information elements | Component << Basic Information Response >> | S | M | Message_Type = RCL |

3.6.1.4 Request sample

```
{
  "EO_ID": "QCUKR+1AB020054",
  "Recall_CODE": "6854f9a6-a2b2-4c08-8000-0173f3c35567",
  "RecallReason1": 1,
  "RecallReason2": 1,
  "RecallReason3": "Comments",
  "Message_Type": "RCL",
  "Code": "873345b2-882f-4064-91f0-90669b46c30a",
}
```

3.6.1.5 Successful response sample

HTTP Status 202

```
{
  "Code": "873345b2-882f-4064-91f0-90669b46c30a",
  "Message_Type": "RCL",
  "Error": false,
  "Errors": null,
  "Checksum": "G6HF5H"
}
```

3.6.1.6 Error response sample

Processing errors

| HTTP status | | |
|----------------------------|-----------------|--|
| << Common response code >> | | |
| 400 | RECALL_TOO_LATE | If the recall is performed after the 24 hours allowed since the original call. |

4 List of Error Codes

4.1 Security errors

| HTTP status | Error Code | |
|-------------|------------|------------------------|
| 401 | | Invalid security token |
| 401 | | Expired security token |

4.2 Processing errors

| HTTP status | Error Code | |
|-------------|----------------------------------|--|
| 400 | FAILED_VALIDATION | Generic validation error. Normally get more detail as below. |
| 400 | REQUIRED_FIELD_FAILED_VALIDATION | Mandatory fields is missing |
| 400 | MAX_LENGTH_FAILED_VALIDATION | Over max length of field. |
| 400 | INVALID_REQUEST_FORMAT | No Type property added to message |
| 400 | INVALID_MESSAGE_TYPE | When the field "Message_Type" is out of the defined list. |
| 400 | UID_ALREADY_RECORDED | Recall code in "Code" property has already been used. |
| 400 | INVALID_INPUT_FORMAT | When the body of the message doesn't contain a valid JSON. |
| 500 | SYSTEM_ERROR | Internal system error. This internal error id should be provided to Dentsu support if required |

4.3 Validation errors

| HTTP status | Error Code | |
|-------------|-------------------------|--|
| 400 | MULTIPLE_UID | Multiple duplicate UI present in the messages Related control: VAL_UI_MULT_MSG |
| 400 | UI_NOT_VALID | UI validity – Exists without Timestamp in the repository. (has never been applied). When application of UI (with Timestamp) occurs. Related Control: VAL_UI_MULT_MSG |
| 400 | UIS_NOT_VALID | UI(s) validity – One or more UIs without Timestamp in the repository. (has never been applied). When application of UI (with Timestamp) occurs. Related Control: VAL_UI_MULT_MSG |
| 400 | UI_NOT_EXIST | UI validity – Exists not in the repository. When any message references UI Related Control: VAL_UI_EXIST_TIME |
| 400 | EXCISE_NUMBER_NOT_VALID | Seed type format wrong. |

| | | |
|-----|------------------------------|---|
| 400 | UI_EXPIRED | Validation that the application or the aggregation date doesn't exceed the 6 months period after the code has been issued. Related Control: VAL_UI_EXPIRY |
| 400 | UI_NOT_EXIST_OR_NOT_IN_STATE | UI – UI is not applied after deactivation. Or UID is not in correct state for activation Related Control: VAL_UI_ORD_REACTIVATION |
| 400 | SHIPMENT_WITHIN_24_HOURS | "Within 24 hours prior to the occurrence of the event" rule for dispatch and trans-loading event messages is a strict rule and the system shall reject non compliant messages. Control is based on the "actual date – Event_Time" time difference Related Control: VAL_EVT_TIME |
| 400 | RECALL_AFTER_ONE_WORKING_DAY | For requests of unit level or aggregated level UIs (ISU, IRU, ISA, IRA), recalls can be performed up to one working day after the original message. Related Control: VAL_EVT_RECALL |
| 400 | EIOD_NOT_EXIST_OR_ACTIVE | Check if EOID, exists and is active Related Control: VAL_ENT_EXIST_EOID VAL_ENT_ACTIVE_EOID |
| 400 | FID_NOT_EXIST_OR_ACTIVE | Check if FID, exists and is active Related Controls: VAL_ENT_EXIST_FID VAL_ENT_ACTIVE_FID |
| 400 | MID_NOT_EXIST_OR_ACTIVE | Check if MID, exists and is active Related Controls: VAL_ENT_EXIST_MID VAL_ENT_ACTIVE_MID |
| 400 | FID_NOT_RELATED_TO_EOID | Check if EOID FID relation Related Control: VAL_ENT_REL_EOID_FID |
| 400 | CLAIM_VALIDATION_FAILED | Caller is not allowed to call this method. |
| 400 | NON_COMPATIBLE_UIS | Activation failed as ordered list of Uid with timestamp, did not match short uids. |
| 400 | NOT_THE_SAME_NUMBER_OF_ITEMS | Activation failed as number of of Uid with timestamp, did not same number as short uids. |